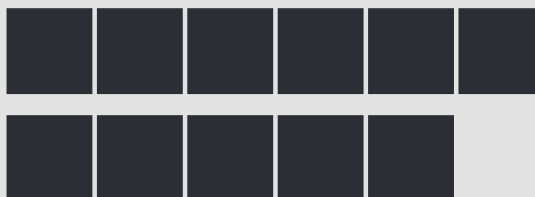


1998 | KBA RAPIDA RA 142 6 L ALV2 PWHA

+ USED PRINTING MACHINES  : 1998  6 COLOR + COATER




- VARIDAMP alcohol dampening
- CX equipment (additional equipment for cardboard until 1.2 mm)
- Ultrasonic double sheet control
- Eltosch IR Infra red dryer
- PWHA semi automatic plate change
- Chromed cylinders
- ALV 2 Double extension delivery
- Blower ionization on feeder
- CIPLink Ink profile presetting via CIP3 data
- ErgoTronic Professional console with ColorTronic ink metering "19" TouchScreen
- Raise 630 mm complete (feeder ,delivery and gallery)
- Grafix Hitronic S powder sprayer



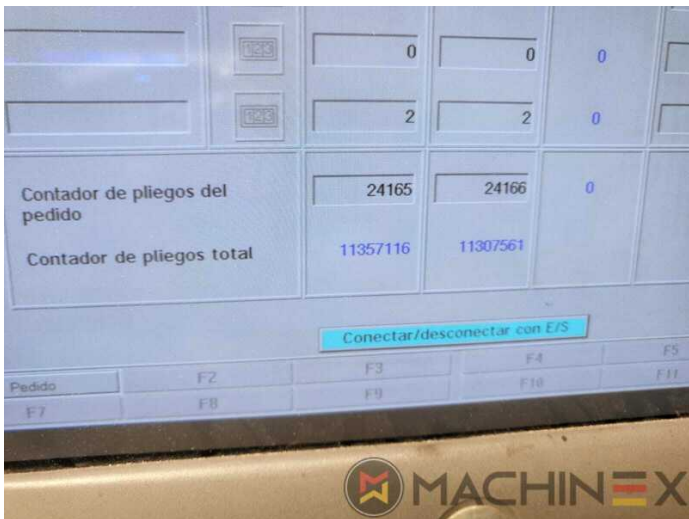
- Sheet Counter : 145 Mio.
- Max. format : 1,020 x 1420 mm
- Stock Thickness :: up to 1.2 mm
- Print output : 14.000 Sph

SPAIN | GERMANY | USA | ITALY | TURKEY | CHINA | BRAZIL | MEXICO | PERU

 +34 682 639 187

 info@machinex.com





SPAIN | GERMANY | USA | ITALY | TURKEY | CHINA | BRAZIL | MEXICO | PERU

+34 682 639 187

info@machinex.com





SPAIN | GERMANY | USA | ITALY | TURKEY | CHINA | BRAZIL | MEXICO | PERU

+34 682 639 187

info@machinex.com



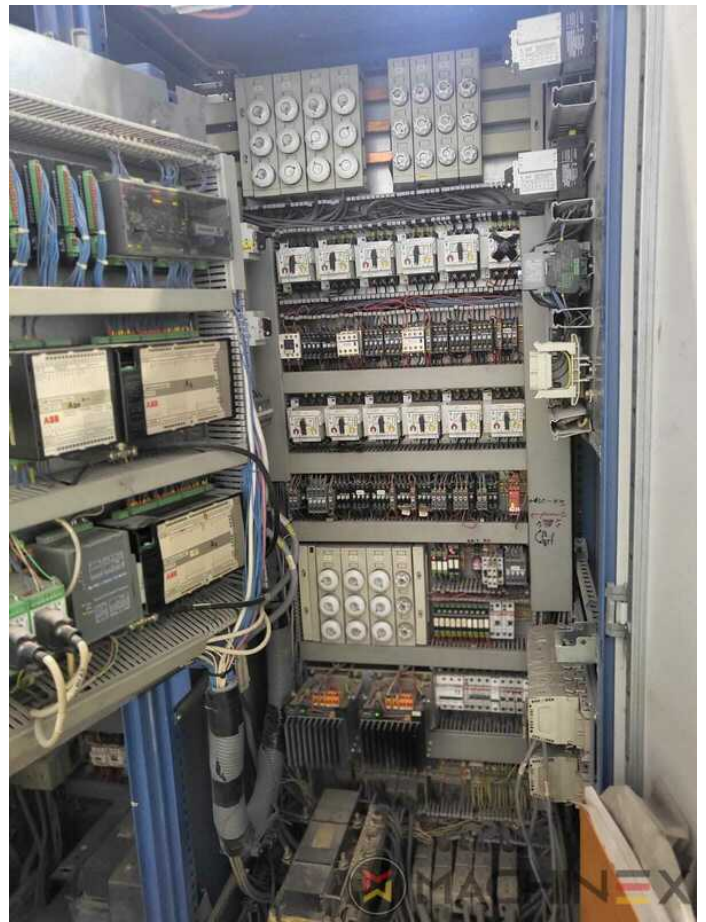


SPAIN | GERMANY | USA | ITALY | TURKEY | CHINA | BRAZIL | MEXICO | PERU

+34 682 639 187

info@machinex.com





SPAIN | GERMANY | USA | ITALY | TURKEY | CHINA | BRAZIL | MEXICO | PERU

+34 682 639 187

info@machinex.com





SPAIN | GERMANY | USA | ITALY | TURKEY | CHINA | BRAZIL | MEXICO | PERU

 +34 682 639 187

 info@machinex.com

