

2017 | HEIDELBERG SUPRASETTER 106 A

+ PREIMPRESIÓN COMPUTER TO PLATE AÑO: 2017 CTP COMPUTER TO PLATE



DESCRIPCIÓN DE LA IMPRESORA

Workflow integration Prinect MetaDimension

EQUIPO

- Prinect Shooter 2017 Version Meta Dimension 17_0_0
- CTP Plate Stacker 90
- Single cassette loader
- Producción de planchas totalmente automática
- Perforación interna Hasta 4 pares de perforaciones
- Prinect Press Manager
- Estación de trabajo



DETALLES TÉCNICOS

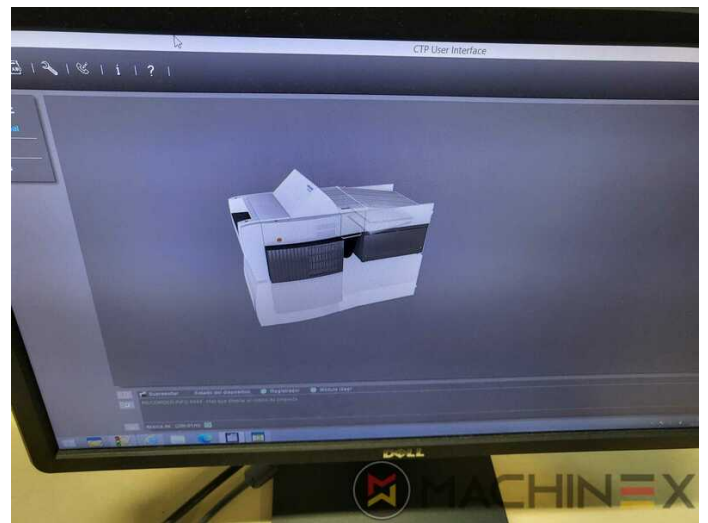
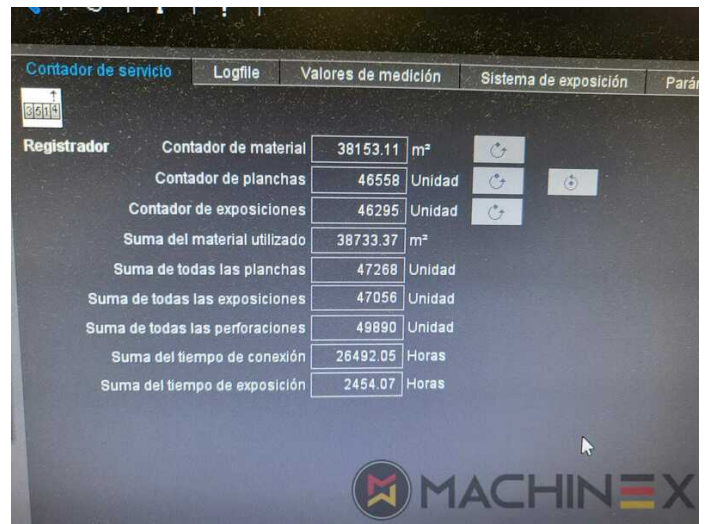
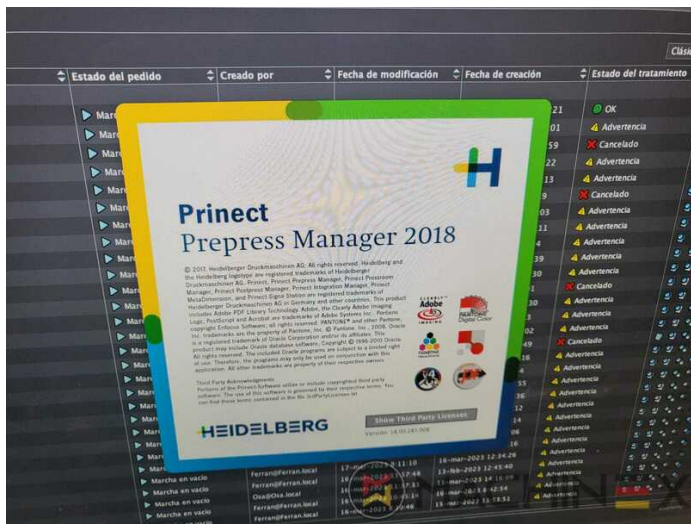
- Horas de trabajo : 26.000 Hours
- formato min.: 370 x 323 mm
- Productividad: 18 Plates per hour
- Espesor :: 0.15-0.35 mm
- Formato máx. : 930 x 1,060 mm
- Tipo láser: 64 Diodos

SPAIN | GERMANY | USA | ITALY | TURKEY | CHINA | BRAZIL | MEXICO | PERU

+34 682 639 187

info@machinex.com



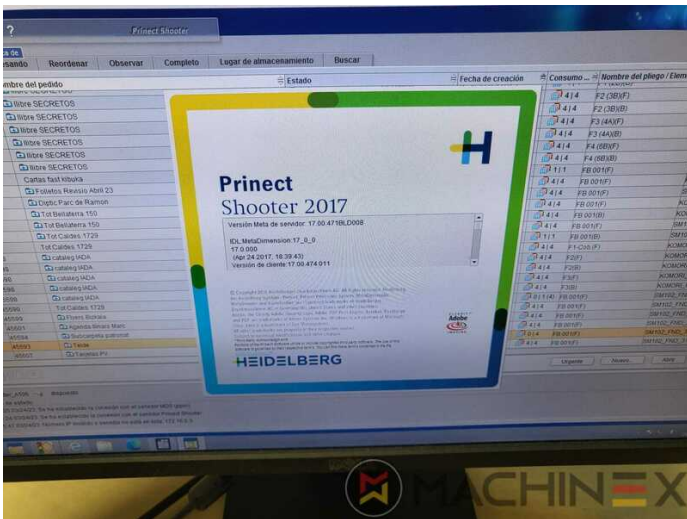


SPAIN | GERMANY | USA | ITALY | TURKEY | CHINA | BRAZIL | MEXICO | PERU

+34 682 639 187

info@machinex.com



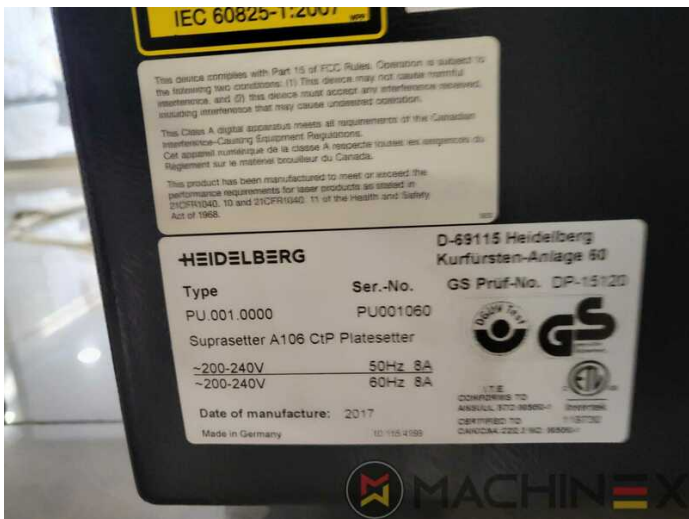


SPAIN | GERMANY | USA | ITALY | TURKEY | CHINA | BRAZIL | MEXICO | PERU

+34 682 639 187

info@machinex.com





SPAIN | GERMANY | USA | ITALY | TURKEY | CHINA | BRAZIL | MEXICO | PERU

+34 682 639 187

info@machinex.com

