

2007 | BOBST SP 102 E EVOLINE

+ EMBALAGEM ◻ ANO: 2007 📄 TROQUELADORA (PLANA)



DESCRIÇÃO DA IMPRESSORA

EQUIPAMENTO

- Ajuste micrométrico da linha central
- Quick lock stripping frame
- CUBE (unidade central eletrônica de Bobst)
- Pull lay operator side
- Push lay opposite operator side
- Special feeder with adjustable suckers
- Board quality processable : paper (min. 80g/m²); cardboard (250/2000 g/m²); corrugated (3 - 4 mm)
- Adjustable gripper grip from: 9 - 17 mm
- Cutting force 250 Tons
- 7.500 speed/h (depending on cardboard and type of job feature)



DETALHES TÉCNICOS

- Horas de trabalho : 51.000
- Carton board : up to 2000 g/m²
- Corrugated board : up to 4 mm
- Sheet size (max in mm): 720 x 1020 mm
- Sheet size (minimum in mm): 350 x 400 mm
- Speed : 7.500 sp/h
- Consumo de eletricidade: 30 Kw

SPAIN | GERMANY | USA | ITALY | TURKEY | CHINA | BRAZIL | MEXICO | PERU

☎ +34 682 639 187

📧 info@machinex.com





SPAIN | GERMANY | USA | ITALY | TURKEY | CHINA | BRAZIL | MEXICO | PERU

+34 682 639 187

info@machinex.com



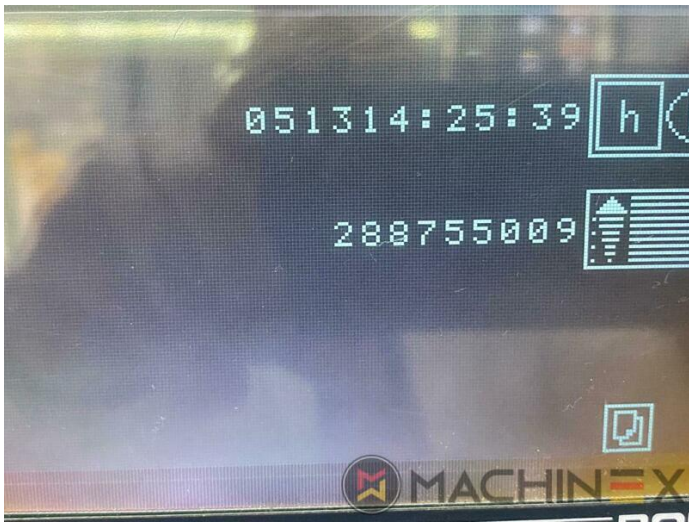


SPAIN | GERMANY | USA | ITALY | TURKEY | CHINA | BRAZIL | MEXICO | PERU

+34 682 639 187

info@machinex.com





SPAIN | GERMANY | USA | ITALY | TURKEY | CHINA | BRAZIL | MEXICO | PERU

+34 682 639 187

info@machinex.com



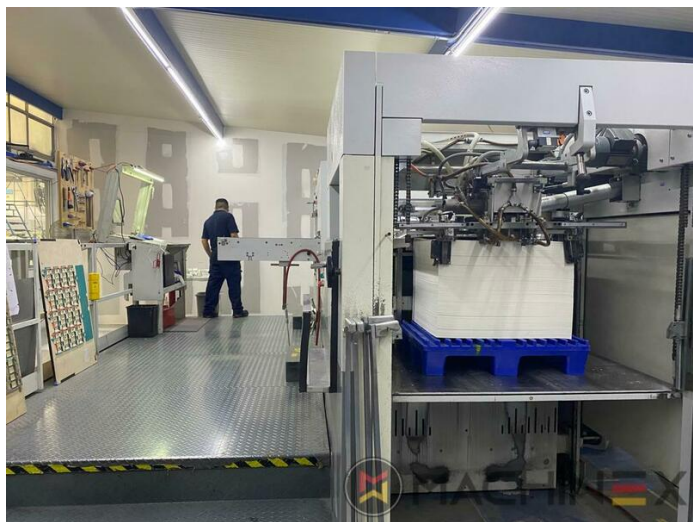


SPAIN | GERMANY | USA | ITALY | TURKEY | CHINA | BRAZIL | MEXICO | PERU

+34 682 639 187

info@machinex.com



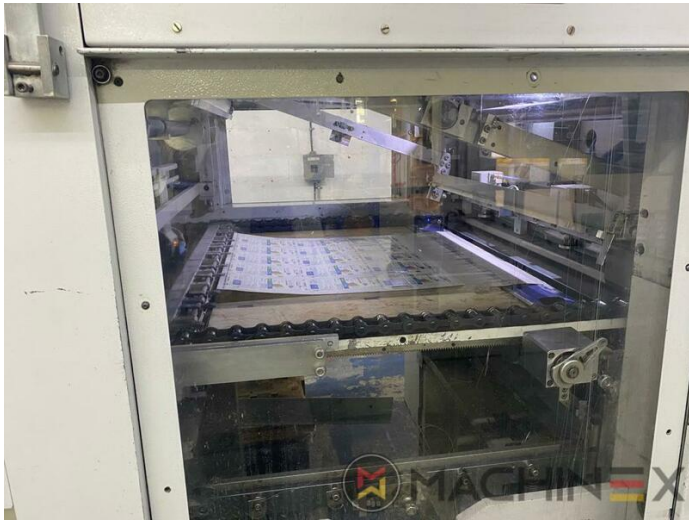


SPAIN | GERMANY | USA | ITALY | TURKEY | CHINA | BRAZIL | MEXICO | PERU

+34 682 639 187

info@machinex.com

 **MACHINEX**

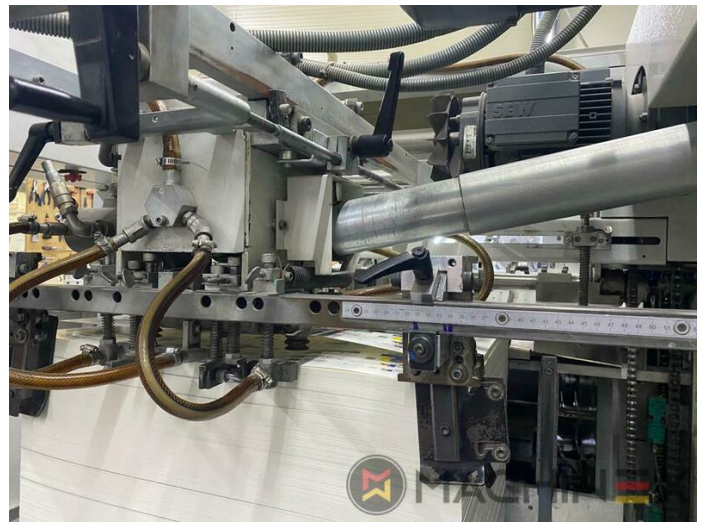


SPAIN | GERMANY | USA | ITALY | TURKEY | CHINA | BRAZIL | MEXICO | PERU

+34 682 639 187

info@machinex.com

 **MACHINEX**



SPAIN | GERMANY | USA | ITALY | TURKEY | CHINA | BRAZIL | MEXICO | PERU

+34 682 639 187

info@machinex.com





SPAIN | GERMANY | USA | ITALY | TURKEY | CHINA | BRAZIL | MEXICO | PERU

+34 682 639 187

info@machinex.com





SPAIN | GERMANY | USA | ITALY | TURKEY | CHINA | BRAZIL | MEXICO | PERU

+34 682 639 187

info@machinex.com





SPAIN | GERMANY | USA | ITALY | TURKEY | CHINA | BRAZIL | MEXICO | PERU

+34 682 639 187

info@machinex.com





SPAIN | GERMANY | USA | ITALY | TURKEY | CHINA | BRAZIL | MEXICO | PERU

+34 682 639 187

info@machinex.com

