

2002 | BOBST SP 102 E

+ VERPACKUNGSMASCHINEN ◻ JAHR: 2002 ◻ STANZ- UND PRÄGEMASCHINEN



DRUCKERBESCHREIBUNG

AUSRÜSTUNG

- Centerline micrometric adjustment
- Quick lock stripping frame
- Pneumatische Verriegelung für Stanzformen
- CUBE (Zentraleinheit Bobst Elektronik)
- Push lay opposite operator side
- Special feeder with adjustable suckers
- Cutting force 250 Tons
- 7.500 speed/h (depending on cardboard and type of job feature)
- Manufactured in Switzerland



TECHNISCHE DETAILS

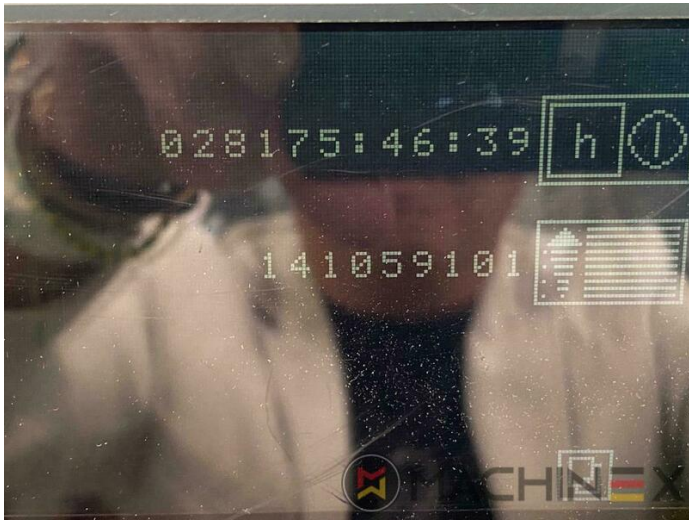
- Betriebsstunden : 28.500 hours
- Vollpappe : up to 2000 g/m²
- Corrugated board : up to 4 mm
- Sheet size (max in mm): 720 x 1020 mm
- Sheet size (minimum in mm): 350 x 400 mm
- Speed : 7.500 sp/h
- Maximal Pressure: 250 Tons
- Processed materials : Paper & Cardboard

SPAIN | GERMANY | USA | ITALY | TURKEY | CHINA | BRAZIL | MEXICO | PERU

+34 682 639 187

info@machinex.com





SPAIN | GERMANY | USA | ITALY | TURKEY | CHINA | BRAZIL | MEXICO | PERU

+34 682 639 187

info@machinex.com



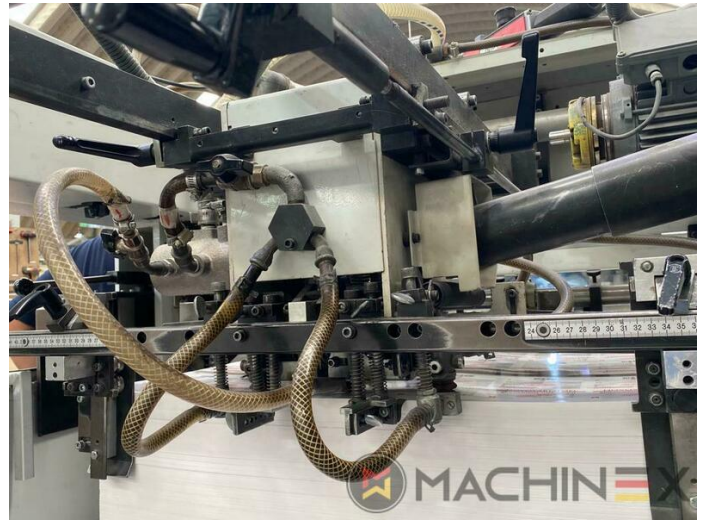
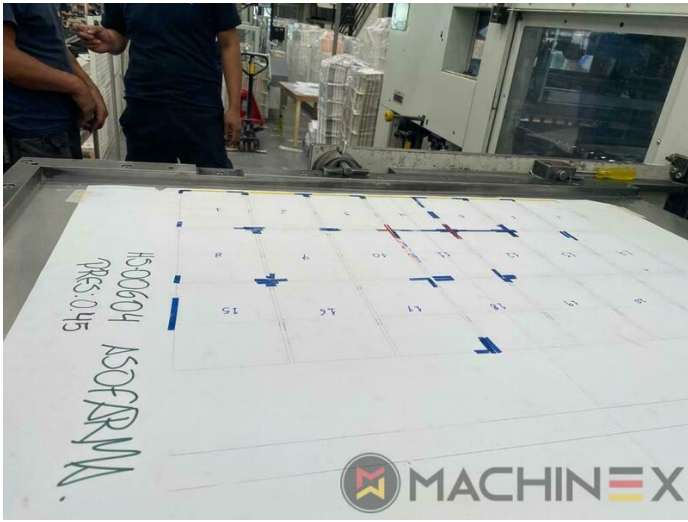


SPAIN | GERMANY | USA | ITALY | TURKEY | CHINA | BRAZIL | MEXICO | PERU

+34 682 639 187

info@machinex.com



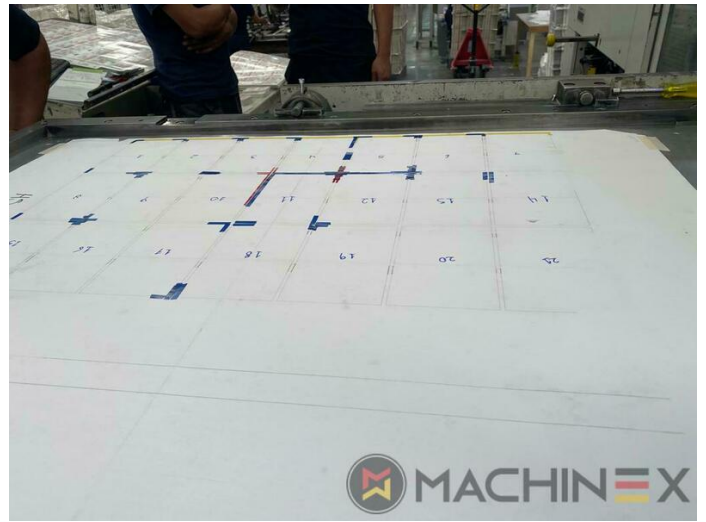


SPAIN | GERMANY | USA | ITALY | TURKEY | CHINA | BRAZIL | MEXICO | PERU

+34 682 639 187

info@machinex.com





SPAIN | GERMANY | USA | ITALY | TURKEY | CHINA | BRAZIL | MEXICO | PERU

+34 682 639 187

info@machinex.com





SPAIN | GERMANY | USA | ITALY | TURKEY | CHINA | BRAZIL | MEXICO | PERU

+34 682 639 187

info@machinex.com





SPAIN | GERMANY | USA | ITALY | TURKEY | CHINA | BRAZIL | MEXICO | PERU

 +34 682 639 187

 info@machinex.com

 **MACHINEX**