

2002 | BOBST SP 102 E

+ CARTOTECNICA ◻ ANNO: 2002 ◻ DOPO-STAMPA



DESCRIZIONE DELLA STAMPANTE

ATTREZZATURE

- Centerline micrometric adjustment
- Quick lock stripping frame
- Pneumatic lock for die cutting chases
- CUBE (central unit bobst electronics)
- Push lay opposite operator side
- Special feeder with adjustable suckers
- Cutting force 250 Tons
- 7.500 speed/h (depending on cardboard and type of job feature)
- Manufactured in Switzerland



DETTAGLI TECNICI

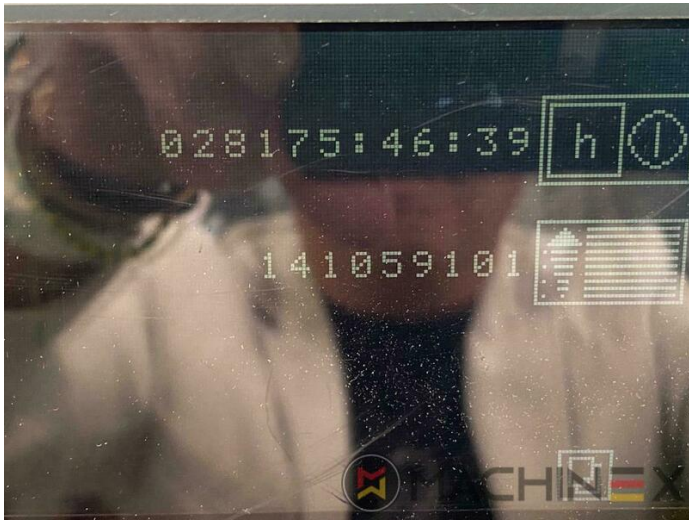
- Orari di lavoro : 28.500 hours
- Carton board : up to 2000 g/m2
- Corrugated board : up to 4 mm
- Sheet size (max in mm): 720 x 1020 mm
- Sheet size (minimum in mm): 350 x 400 mm
- Speed : 7.500 sp/h
- Pressione massima: 250 Tons
- Processed materials : Paper & Cardboard

SPAIN | GERMANY | USA | ITALY | TURKEY | CHINA | BRAZIL | MEXICO | PERU

+34 682 639 187

info@machinex.com





SPAIN | GERMANY | USA | ITALY | TURKEY | CHINA | BRAZIL | MEXICO | PERU

+34 682 639 187

info@machinex.com



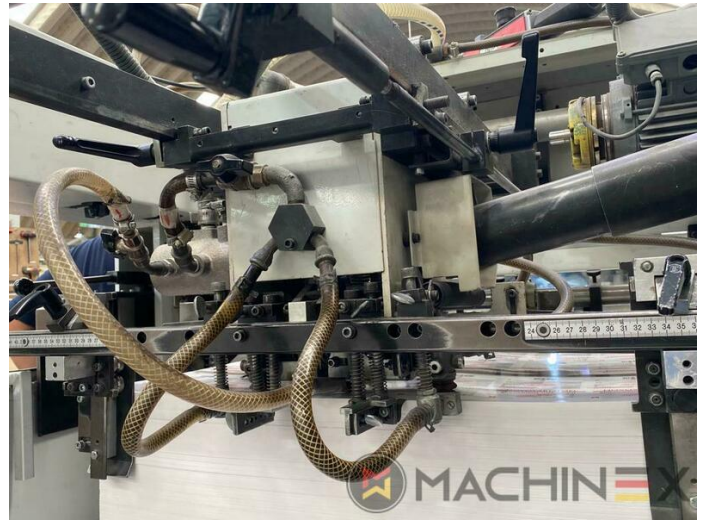
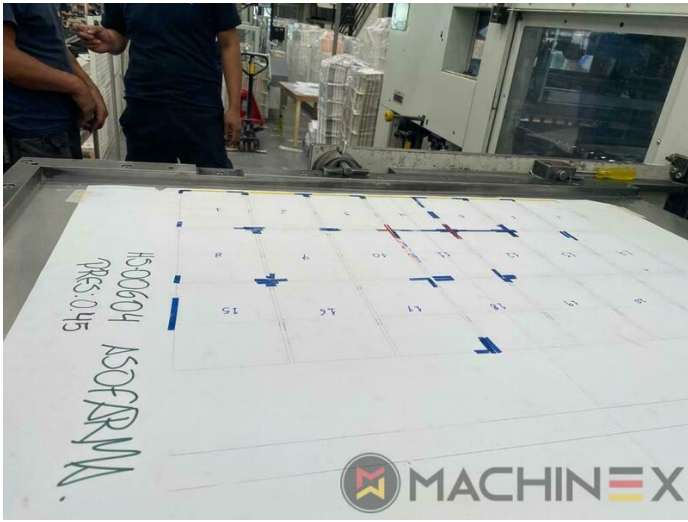


SPAIN | GERMANY | USA | ITALY | TURKEY | CHINA | BRAZIL | MEXICO | PERU

+34 682 639 187

info@machinex.com



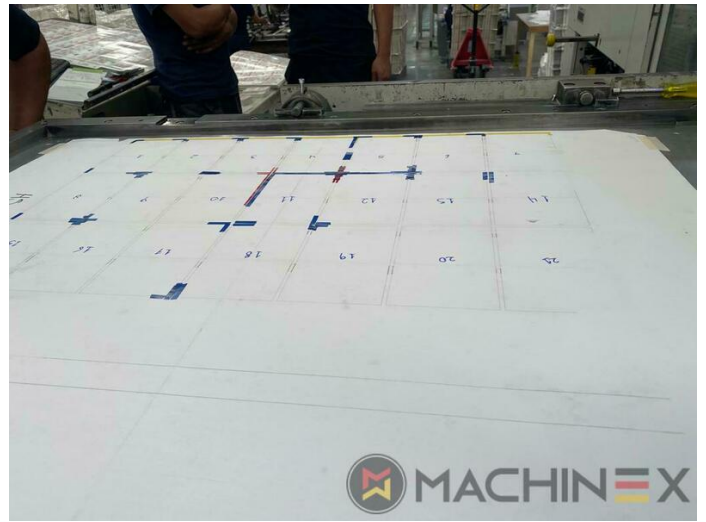


SPAIN | GERMANY | USA | ITALY | TURKEY | CHINA | BRAZIL | MEXICO | PERU

+34 682 639 187

info@machinex.com



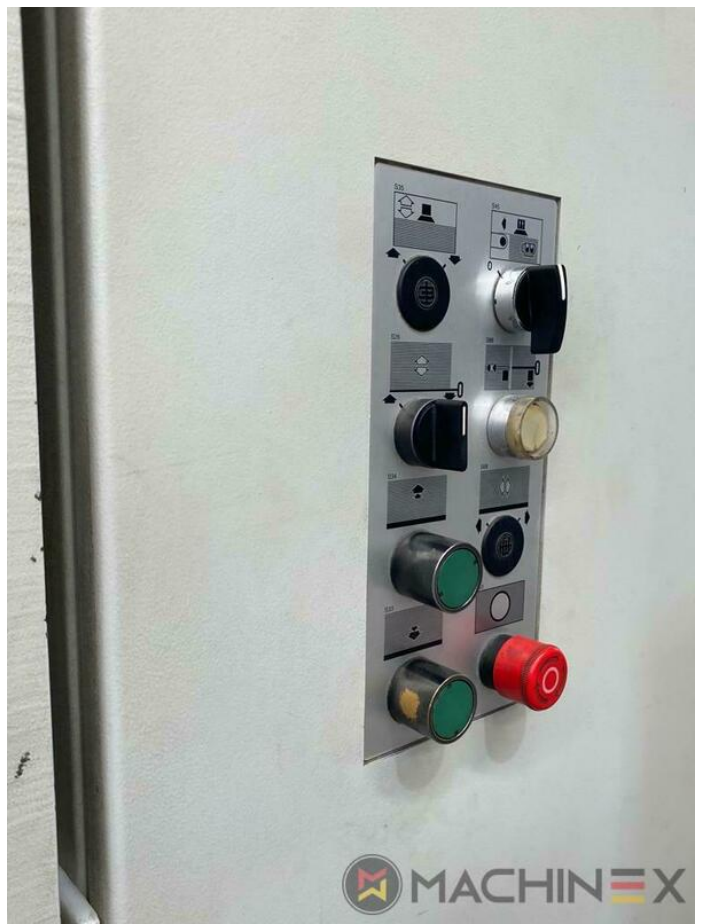


SPAIN | GERMANY | USA | ITALY | TURKEY | CHINA | BRAZIL | MEXICO | PERU

+34 682 639 187

info@machinex.com





SPAIN | GERMANY | USA | ITALY | TURKEY | CHINA | BRAZIL | MEXICO | PERU

+34 682 639 187

info@machinex.com





SPAIN | GERMANY | USA | ITALY | TURKEY | CHINA | BRAZIL | MEXICO | PERU

 +34 682 639 187

 info@machinex.com

 **MACHINEX**