

2002 | BOBST SP 102 E

+ EMBALAGEM ◊ ANO: 2002 📄 TROQUELADORA (PLANA)



DESCRIÇÃO DA IMPRESSORA

EQUIPAMENTO

- Ajuste micrométrico da linha central
- Quick lock stripping frame
- Pneumatic lock for die cutting chases
- CUBE (unidade central eletrónica de Bobst)
- Push lay opposite operator side
- Special feeder with adjustable suckers
- Cutting force 250 Tons
- 7.500 speed/h (depending on cardboard and type of job feature)
- Manufactured in Switzerland



DETALHES TÉCNICOS

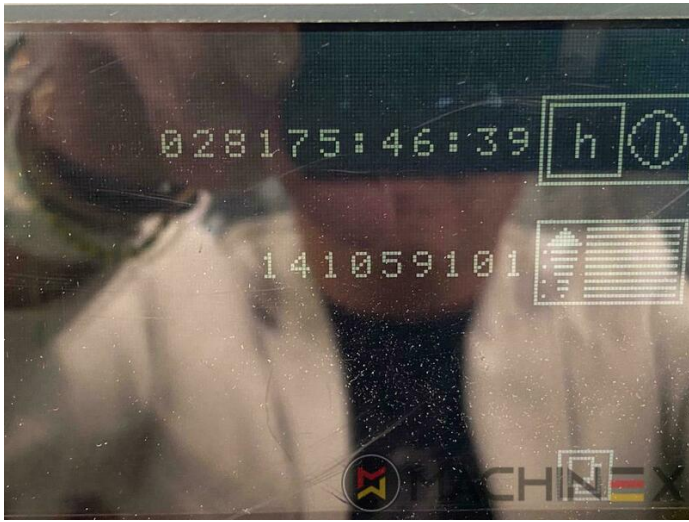
- Horas de trabalho : 28.500 hours
- Carton board : up to 2000 g/m2
- Corrugated board : up to 4 mm
- Sheet size (max in mm): 720 x 1020 mm
- Sheet size (minimum in mm): 350 x 400 mm
- Speed : 7.500 sp/h
- Pressão máxima: 250 Tons
- Processed materials : Paper & Cardboard

SPAIN | GERMANY | USA | ITALY | TURKEY | CHINA | BRAZIL | MEXICO | PERU

☎ +34 682 639 187

✉ info@machinex.com





SPAIN | GERMANY | USA | ITALY | TURKEY | CHINA | BRAZIL | MEXICO | PERU

+34 682 639 187

info@machinex.com

 **MACHINEX**

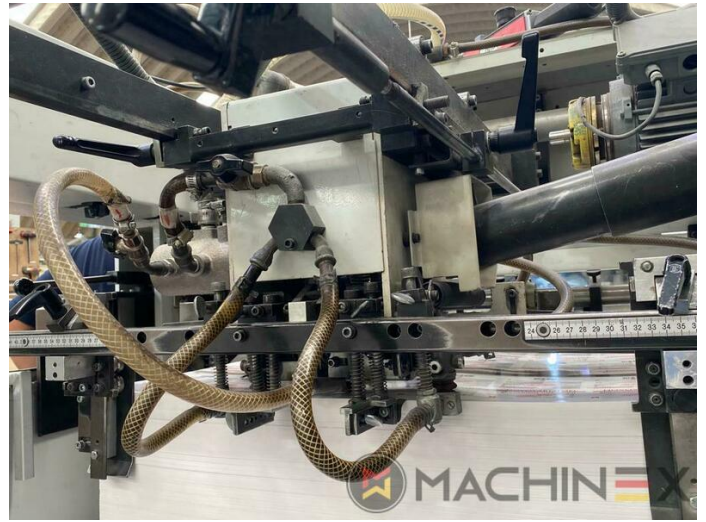
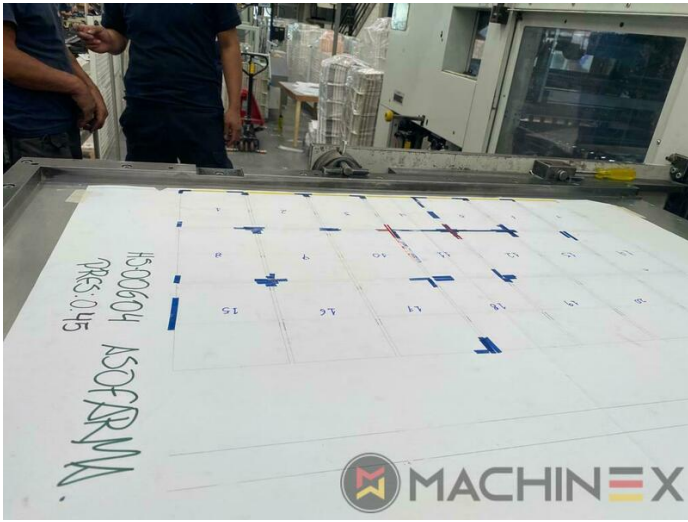


SPAIN | GERMANY | USA | ITALY | TURKEY | CHINA | BRAZIL | MEXICO | PERU

+34 682 639 187

info@machinex.com

 **MACHINEX**

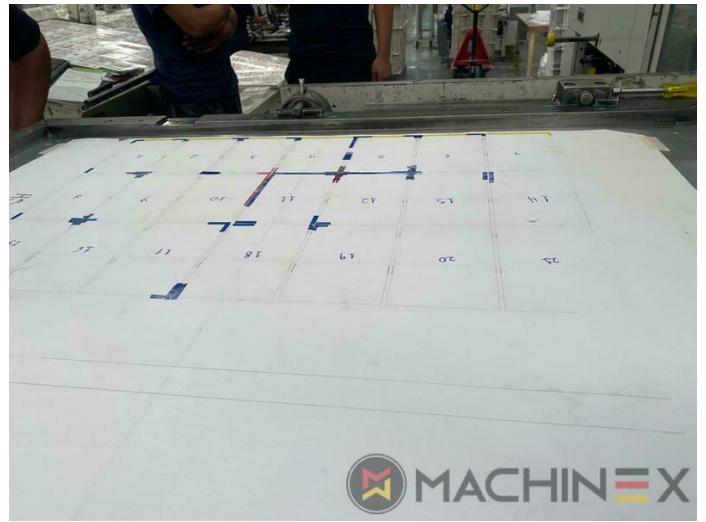


SPAIN | GERMANY | USA | ITALY | TURKEY | CHINA | BRAZIL | MEXICO | PERU

+34 682 639 187

info@machinex.com



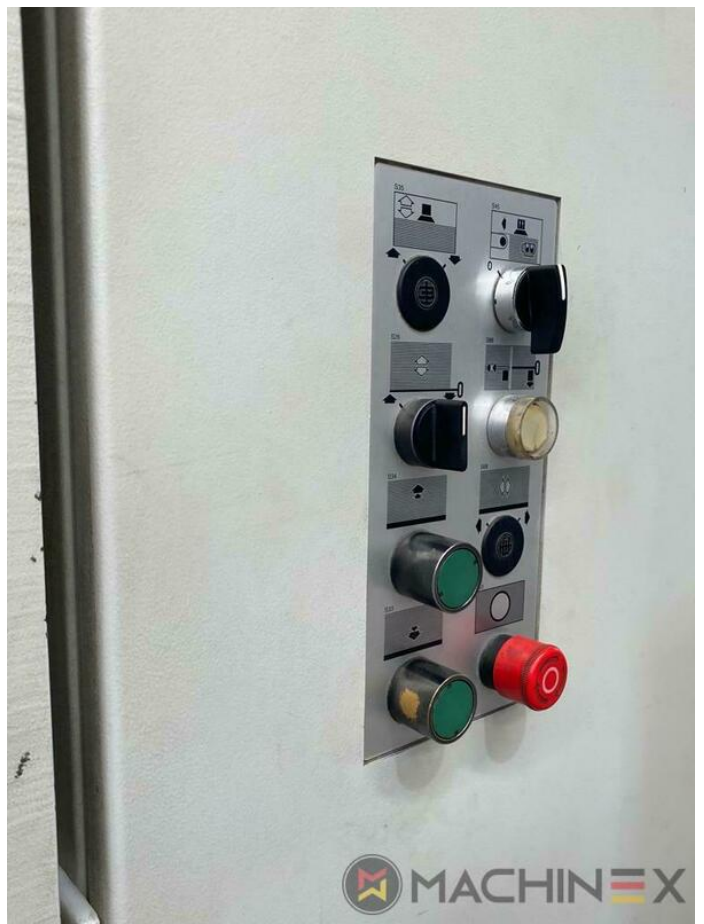


SPAIN | GERMANY | USA | ITALY | TURKEY | CHINA | BRAZIL | MEXICO | PERU

+34 682 639 187

info@machinex.com





SPAIN | GERMANY | USA | ITALY | TURKEY | CHINA | BRAZIL | MEXICO | PERU

+34 682 639 187

info@machinex.com





SPAIN | GERMANY | USA | ITALY | TURKEY | CHINA | BRAZIL | MEXICO | PERU

 +34 682 639 187

 info@machinex.com

