

2007 | BOBST SPANTHERA 106 LER

+ USED PACKAGING MACHINES ⌚ ГОД: 2007 📄 USED DIE CUTTER (FLATBED)



ОПИСАНИЕ ПРИНТЕРА

ОПИСАНИЕ

- Stripping section
- Micro metric adjustment
- Centerline micrometric adjustment
- C.U.B.E. Bobst-Electronic machine operating system
- Left hand side register pull lays
- Automatic Die Cutter with stripping and Blanking
- Pull guide (OS) with Double Sheet Detector
- Stripping Unit with 2x upper chases and 2x lower chases
- 1 x upper striping frame with accessorie
- 1 x Lower striping frame with some accessories
- CUBE (central unit bobst electronics)
- Integrated quick-lock system ensuring fast and easy job changeovers
- Automatic equipment centering, locking for chase and supporting plate, ensuring perfect quality achievement of cutting and creasing
- Optical Lateral Register

SPAIN | GERMANY | USA | ITALY | TURKEY | CHINA | BRAZIL | MEXICO | PERU



ТЕХНИЧЕСКИЕ ПОДРОБНОСТИ

- Carton board : up to 1000 g/m²
- Corrugated board: up to 4 mm
- Sheet size (max in mm): 760 x 1,060 mm
- Sheet size (minimum in mm) : 350 x 400 mm
- Speed : 9.000 s/h
- Max Pressure : 2.6 MN

☎ +34 682 639 187

📧 info@machinex.com



- BSSR Integrated Quick locking system
- Automatic equipment centering and locking for chase and supporting plate

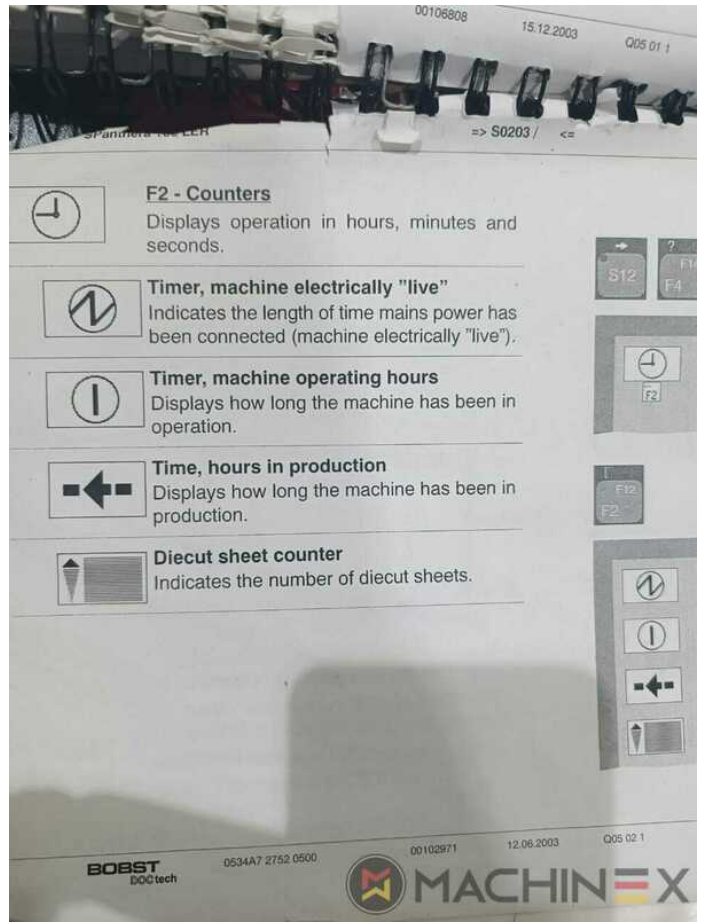


SPAIN | GERMANY | USA | ITALY | TURKEY | CHINA | BRAZIL | MEXICO | PERU

+34 682 639 187

info@machinex.com





SPAIN | GERMANY | USA | ITALY | TURKEY | CHINA | BRAZIL | MEXICO | PERU

+34 682 639 187

info@machinex.com



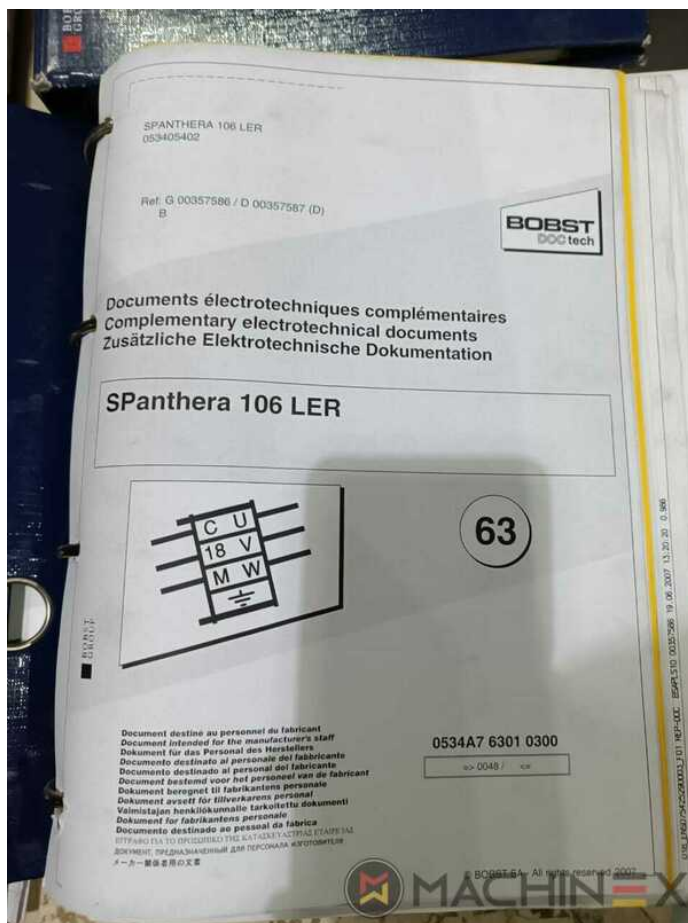
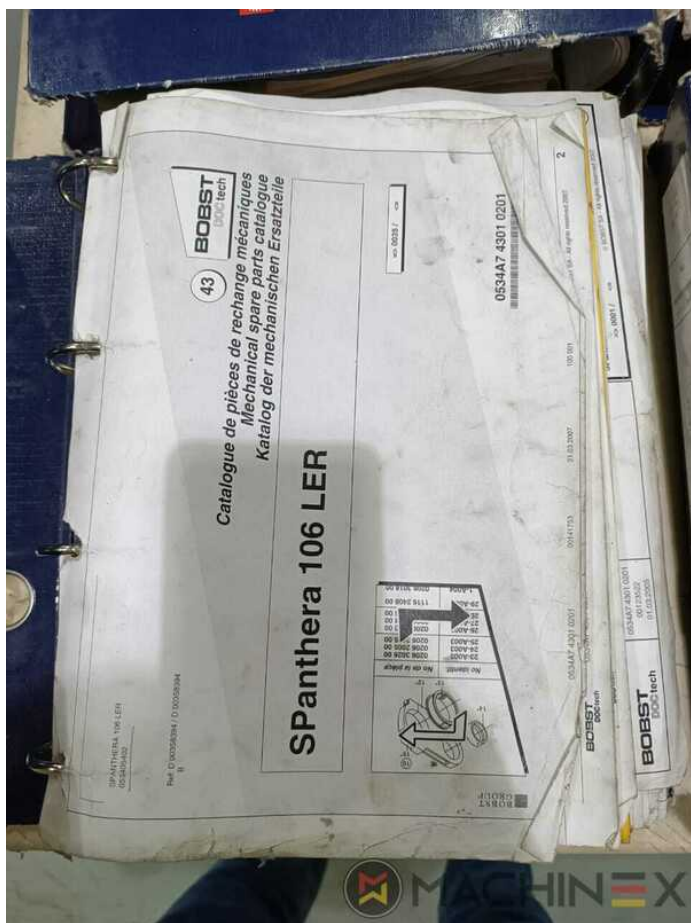


SPAIN | GERMANY | USA | ITALY | TURKEY | CHINA | BRAZIL | MEXICO | PERU

+34 682 639 187

info@machinex.com





SPAIN | GERMANY | USA | ITALY | TURKEY | CHINA | BRAZIL | MEXICO | PERU

+34 682 639 187

info@machinex.com





SPAIN | GERMANY | USA | ITALY | TURKEY | CHINA | BRAZIL | MEXICO | PERU

+34 682 639 187

info@machinex.com





SPAIN | GERMANY | USA | ITALY | TURKEY | CHINA | BRAZIL | MEXICO | PERU

+34 682 639 187

info@machinex.com



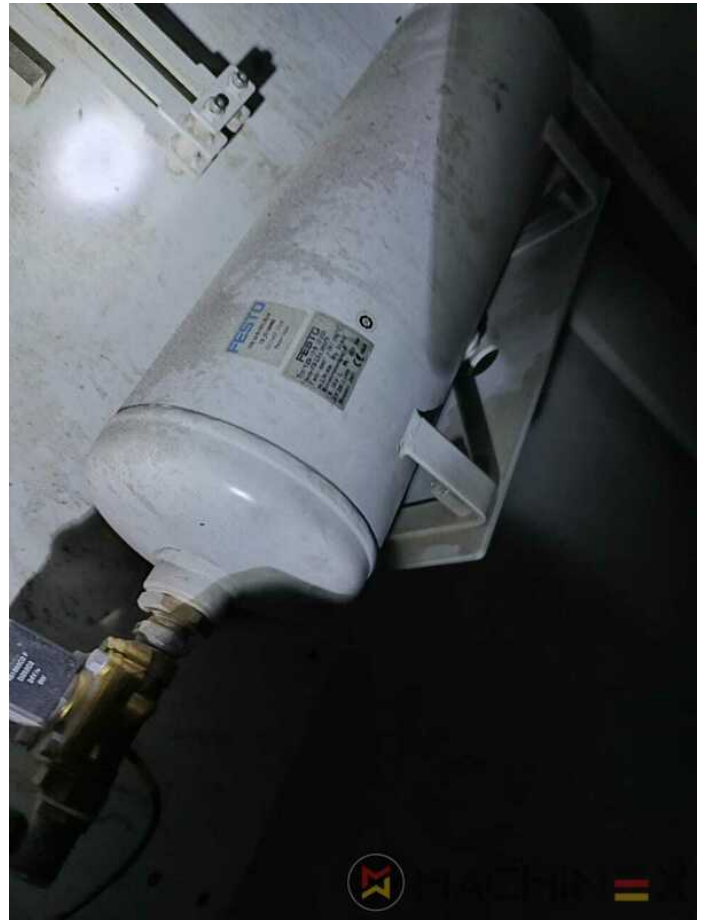


SPAIN | GERMANY | USA | ITALY | TURKEY | CHINA | BRAZIL | MEXICO | PERU

+34 682 639 187

info@machinex.com





SPAIN | GERMANY | USA | ITALY | TURKEY | CHINA | BRAZIL | MEXICO | PERU

 +34 682 639 187

 info@machinex.com

 **MACHINEX**



SPAIN | GERMANY | USA | ITALY | TURKEY | CHINA | BRAZIL | MEXICO | PERU

 +34 682 639 187

 info@machinex.com

 **MACHINEX**



SPAIN | GERMANY | USA | ITALY | TURKEY | CHINA | BRAZIL | MEXICO | PERU

+34 682 639 187

info@machinex.com





SPAIN | GERMANY | USA | ITALY | TURKEY | CHINA | BRAZIL | MEXICO | PERU

 +34 682 639 187

 info@machinex.com

 **MACHINEX**