

# 2006 | KOMORI LS 840 (P) + LX

+ STAMPA OFFSET    ANNO: 2006    8 COLOR + COATER



## DESCRIZIONE DELLA STAMPANTE

Hybrid Version Baldwin LED - UV from 2018 (2 lamp system)

## ATTREZZATURE

- FAPC full automatic plate change
- Automatic impression cylinder washing device
- KHS AI Advanced Interface
- PDC-lite II (Print Density Control )
- KOMORIMATIC-2 con smorzamento ad effetto delta
- Infrarossi + Essiccatore ad aria calda
- Controllo della temperatura dell'inchostro ITC
- Komori AMR completamente automatico „ Sistema "One Touch" per il cambio di lavoro
- PQC (print quality control console)
- Automatic Ink Roller Cleaner (AIRC )
- Automatic blanket Washers (ABW)
- KMS IV Komori Management System
- Pressa sollevata 300 mm
- Komori Extended delivery

SPAIN | GERMANY | USA | ITALY | TURKEY | CHINA | BRAZIL | MEXICO | PERU

+34 682 639 187

info@machinex.com



## DETTAGLI TECNICI

- Contatore (Milioni) : 159 Million
- Formato massimo : 720 x 1030 mm
- Formato mínimo :: 360 x 520 mm
- Stampa in uscita fogli all'ora : 15.000 s.p.h.
- Formato di stampa max.: 710 x 1020 mm

- Dispositivo di perfezionamento automatico 8/0; 4/4



SPAIN | GERMANY | USA | ITALY | TURKEY | CHINA | BRAZIL | MEXICO | PERU

+34 682 639 187

info@machinex.com





SPAIN | GERMANY | USA | ITALY | TURKEY | CHINA | BRAZIL | MEXICO | PERU

+34 682 639 187

info@machinex.com



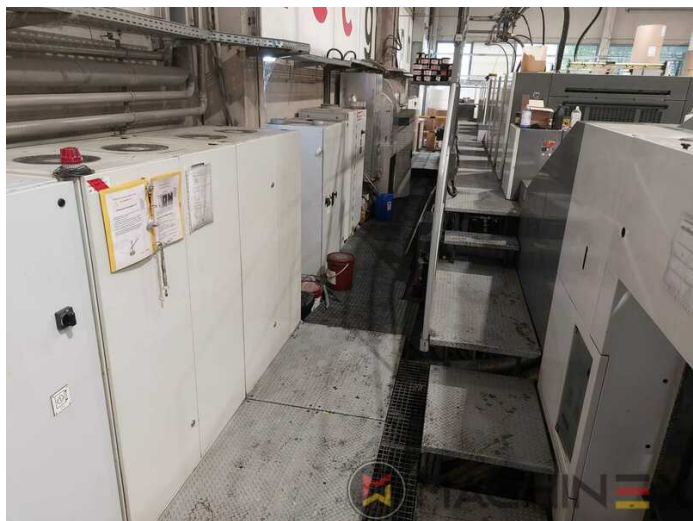
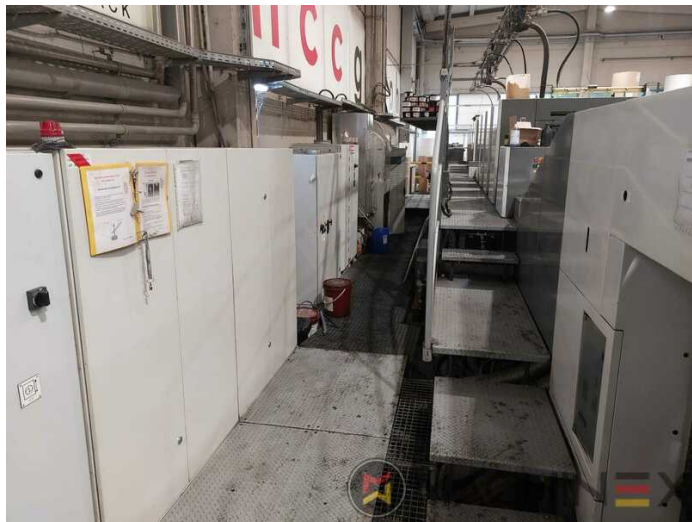


SPAIN | GERMANY | USA | ITALY | TURKEY | CHINA | BRAZIL | MEXICO | PERU

+34 682 639 187

info@machinex.com





SPAIN | GERMANY | USA | ITALY | TURKEY | CHINA | BRAZIL | MEXICO | PERU

+34 682 639 187

info@machinex.com

