

2006 | KOMORI LS 840 (P) + LX

+ USED PRINTING MACHINES 年: 2006 8 COLOR + COATER



プリンターの説明

Hybrid Version Baldwin LED - UV from 2018 (2 lamp system)

装置

- FAPC full automatic plate change
- Automatic impression cylinder washing device
- KHS AI Advanced Interface
- PDC-lite II (Print Density Control)
- KOMORIMATIC-2 with delta effect dampening
- Infrared + Hot air dryer
- ITC Ink temperature Control
- Komori AMR fully automatic „ One Touch "job change system
- PQC (print quality control console)
- Automatic Ink Roller Cleaner (AIRC)
- Automatic blanket Washers (ABW)
- KMS IV Komori Management System
- Raised press 300 mm
- Komori Extended delivery



技術的な 詳細

- Sheet Counter : 159 Million
- Max. format : 720 x 1030 mm
- Min. format :: 360 x 520 mm
- Print output : 15.000 s.p.h.
- Max. print format: 710 x 1020 mm

SPAIN | GERMANY | USA | ITALY | TURKEY | CHINA | BRAZIL | MEXICO | PERU

+34 682 639 187

info@machinex.com



- Automatic perfecting device 8/0; 4/4



SPAIN | GERMANY | USA | ITALY | TURKEY | CHINA | BRAZIL | MEXICO | PERU

+34 682 639 187

info@machinex.com





SPAIN | GERMANY | USA | ITALY | TURKEY | CHINA | BRAZIL | MEXICO | PERU

+34 682 639 187

info@machinex.com

 **MACHINEX**

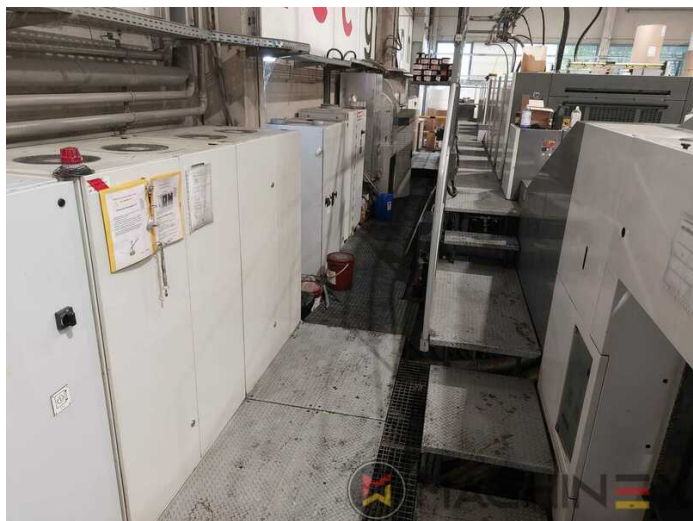


SPAIN | GERMANY | USA | ITALY | TURKEY | CHINA | BRAZIL | MEXICO | PERU

+34 682 639 187

info@machinex.com





SPAIN | GERMANY | USA | ITALY | TURKEY | CHINA | BRAZIL | MEXICO | PERU

+34 682 639 187

info@machinex.com

