

# 2016 | MUELLER-MARTINI ALEGRO A6 (3030-8300)

+ USED BINDERY MACHINES    2016    USED PERFECT BINDER



## OPIS DRUKARKI

Model Alegro A6 (3030-8300) 1 hand feeding station 16 station gathering machine 3692 ASAC & ASIR III signature recognition system exit gate 3715 intermediate element with jogging device perfect binder Alegro A6 with 17 clamps Commander control with touch screen BDC book data control 2 spine preparation Hotmelt spine glueing with premelter Hotmelt side glueing with premelter VPN 35 PUR spine glueing with nozzle system device with premelter pre-heating station with vacuum system cover feeder 2 nipping station laydown unit AMS adhesive monitoring system drying section AMBAFLEX drying tower emergency exit three knife trimmer Solit 3675 Book stacker CB-18 without compressors / air supply



## SZCZEGÓŁY TECHNICZNE

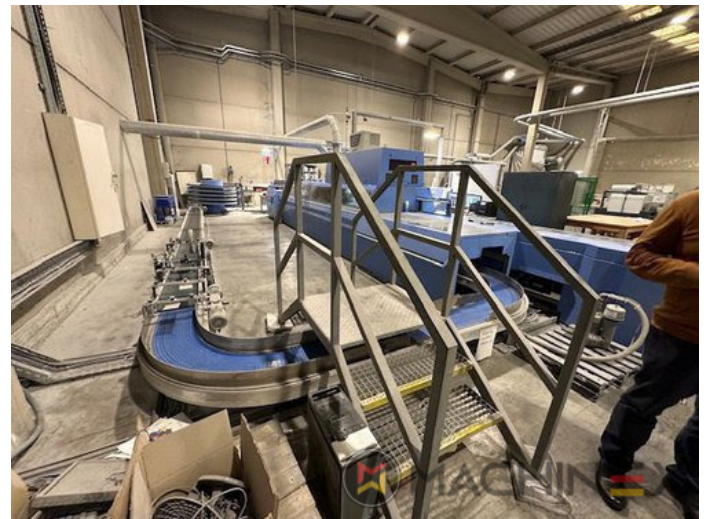
- clamps: 17
- Working Hours : 12.400 h.
- Stacje: 16
- Cycles/h: 6.000
- Sheet size ( minimum in mm ): 480 mm

SPAIN | GERMANY | USA | ITALY | TURKEY | CHINA | BRAZIL | MEXICO | PERU

+34 682 639 187

info@machinex.com

 MACHINEX



SPAIN | GERMANY | USA | ITALY | TURKEY | CHINA | BRAZIL | MEXICO | PERU

+34 682 639 187

info@machinex.com





SPAIN | GERMANY | USA | ITALY | TURKEY | CHINA | BRAZIL | MEXICO | PERU

+34 682 639 187

info@machinex.com

