

1998 | KBA RAPIDA RA 162 (A) 5

+ MÁQUINAS DE IMPRESIÓN 1998 5 COLORES



DESCRIPCIÓN DE LA IMPRESORA

EQUIPO

- Control electromecánico de doble hoja
- Amortiguador de alcohol VARIDAMP
- Control de doble hoja ultrasónico
- Technotrans beta C
- Dispositivo automático de lavado del rodillo de tinta
- PWVA Cambio totalmente automático
- Cilindros cromados
- Weko AP 260 spray de polvo con ionización y control remoto
- Ionizadores sopladores en el alimentador
- Secador IR Eltosch Drytronic
- ColorTronic con 35 teclas de tinta de 30 mm de ancho cada una



DETALLES TÉCNICOS

- Formato máx. : 1200 x 1620 mm
- Contador diario : 158 Mio.
- Rendimiento de Impresión : 12.000 sp/h
- formato min.: 600 x 920 mm
- Espesor :: 0,06 up to 0,8 mm

SPAIN | GERMANY | USA | ITALY | TURKEY | CHINA | BRAZIL | MEXICO | PERU

+34 682 639 187

info@machinex.com





SPAIN | GERMANY | USA | ITALY | TURKEY | CHINA | BRAZIL | MEXICO | PERU

+34 682 639 187

info@machinex.com





SPAIN | GERMANY | USA | ITALY | TURKEY | CHINA | BRAZIL | MEXICO | PERU

+34 682 639 187

info@machinex.com



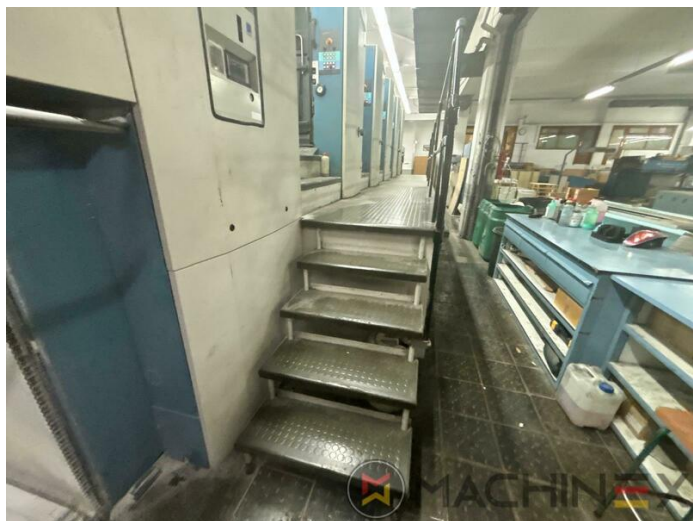


SPAIN | GERMANY | USA | ITALY | TURKEY | CHINA | BRAZIL | MEXICO | PERU

+34 682 639 187

info@machinex.com



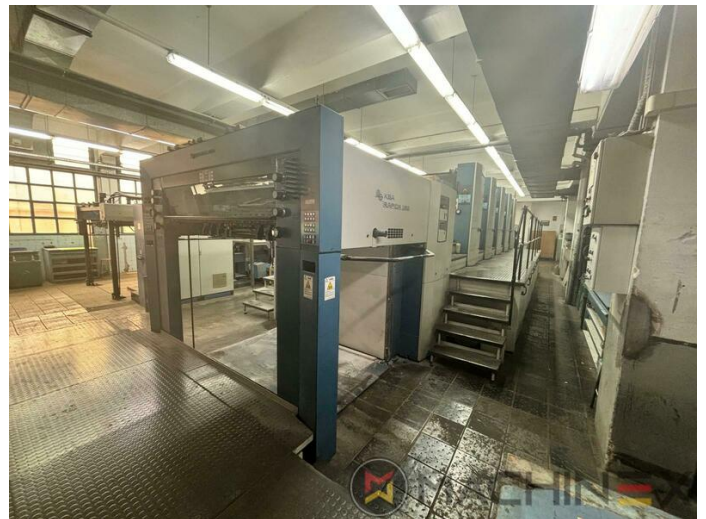


SPAIN | GERMANY | USA | ITALY | TURKEY | CHINA | BRAZIL | MEXICO | PERU

+34 682 639 187

info@machinex.com



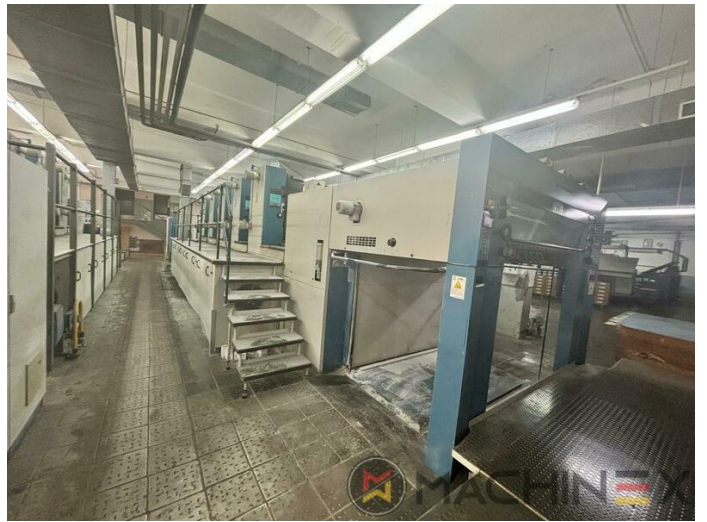


SPAIN | GERMANY | USA | ITALY | TURKEY | CHINA | BRAZIL | MEXICO | PERU

+34 682 639 187

info@machinex.com





SPAIN | GERMANY | USA | ITALY | TURKEY | CHINA | BRAZIL | MEXICO | PERU

+34 682 639 187

info@machinex.com





SPAIN | GERMANY | USA | ITALY | TURKEY | CHINA | BRAZIL | MEXICO | PERU

+34 682 639 187


info@machinex.com





SPAIN | GERMANY | USA | ITALY | TURKEY | CHINA | BRAZIL | MEXICO | PERU

 +34 682 639 187

 info@machinex.com

 **MACHINEX**