

2014 | KBA RAPIDA RA 106 6 L FAPC ALV3 CX

+ USED PRINTING MACHINES AN: 2014 6 COLOR + COATER



DESCRIPTION DE L'IMPRIMANTE

ÉQUIPEMENT

- Double sheet control - ultrasonic
- VARIDAMP alcohol dampening
- Equipement CX (équipement supplémentaire pour le carton jusqu'à 1,2 mm)
- Intercommunication system between infeed and delivery
- elevated press 450 mm
- Lack Unit (Harris & Bruno)
- Hikey Picker
- Dust Removal in the Infeed
- CleanTronic Multi - Multi-purpose washing system for blankets and impression cylinders & roller washing system in case of using different types of ink
- EES - Emission Extraction System
- Wall screen for visualisation of all press processes
- Additional package "Active air-cooling for control cabinets"
- Extended delivery 3800mm (ALV 3)
- Blower cassette for cardboard sheet guiding
- Fully-automatic plate change FAPC, incl. one pneumatic plate bending device at the gallery
- Additional package "High efficiency antistatic equipment"

SPAIN | GERMANY | USA | ITALY | TURKEY | CHINA | BRAZIL | MEXICO | PERU



DÉTAILS TECHNIQUES

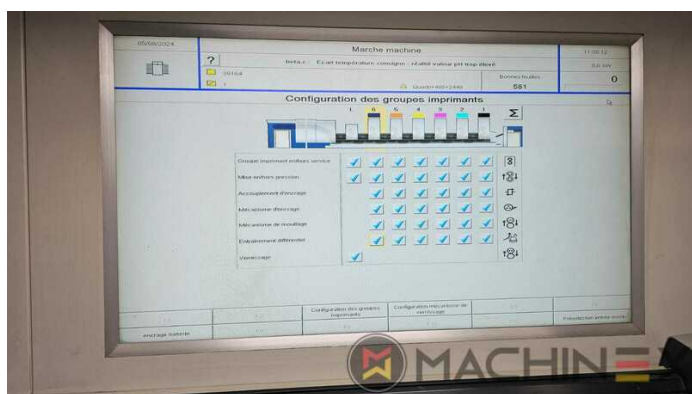
- Sheet Counter : 243 Million
- Print output : 20,000 sh/h
- Stock Thickness :: 40g/m2 - 1,2 mm
- Max. format : 740 x 1060 mm
- Min. format :: 340 x 480 mm

+34 682 639 187

info@machinex.com



- Inking unit temperature control without ink duct roller cooling, incl. High-tech combi-cooling unit, air-cooled (TECHNOTRANS)
- Additional package "High-Speed" for straight-printing presses 20.000 sh/h
- KBA VariDry IR/HotAir in delivery and extended delivery (ALV3)
- Combi-Cooling Unit with Remote Condenser and FloClear Filtration System
- Varnish supply and cleaning system for water-based varnish, with operation via control console, pump output dependent on viscosity (HARRIS & BRUNO)
- Dryer connection for final and intermediate dryers
- In-line tower coater
- HS - High Speed package 20.000 sh/h

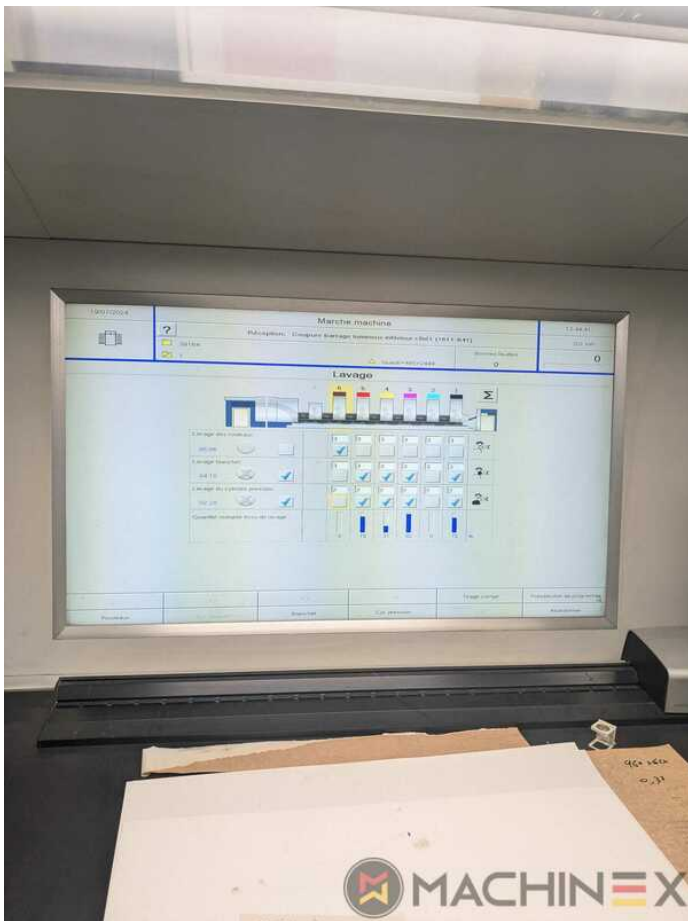


SPAIN | GERMANY | USA | ITALY | TURKEY | CHINA | BRAZIL | MEXICO | PERU

+34 682 639 187

info@machinex.com





SPAIN | GERMANY | USA | ITALY | TURKEY | CHINA | BRAZIL | MEXICO | PERU

+34 682 639 187

info@machinex.com





SPAIN | GERMANY | USA | ITALY | TURKEY | CHINA | BRAZIL | MEXICO | PERU

+34 682 639 187

info@machinex.com





SPAIN | GERMANY | USA | ITALY | TURKEY | CHINA | BRAZIL | MEXICO | PERU

+34 682 639 187

info@machinex.com





SPAIN | GERMANY | USA | ITALY | TURKEY | CHINA | BRAZIL | MEXICO | PERU

+34 682 639 187

info@machinex.com





SPAIN | GERMANY | USA | ITALY | TURKEY | CHINA | BRAZIL | MEXICO | PERU

+34 682 639 187

info@machinex.com

 **MACHINEX**



SPAIN | GERMANY | USA | ITALY | TURKEY | CHINA | BRAZIL | MEXICO | PERU

+34 682 639 187

info@machinex.com





SPAIN | GERMANY | USA | ITALY | TURKEY | CHINA | BRAZIL | MEXICO | PERU

+34 682 639 187

info@machinex.com





SPAIN | GERMANY | USA | ITALY | TURKEY | CHINA | BRAZIL | MEXICO | PERU

+34 682 639 187

info@machinex.com





SPAIN | GERMANY | USA | ITALY | TURKEY | CHINA | BRAZIL | MEXICO | PERU

+34 682 639 187

info@machinex.com

 **MACHINEX**



SPAIN | GERMANY | USA | ITALY | TURKEY | CHINA | BRAZIL | MEXICO | PERU

+34 682 639 187

info@machinex.com





SPAIN | GERMANY | USA | ITALY | TURKEY | CHINA | BRAZIL | MEXICO | PERU

+34 682 639 187

info@machinex.com





SPAIN | GERMANY | USA | ITALY | TURKEY | CHINA | BRAZIL | MEXICO | PERU

+34 682 639 187

info@machinex.com

 **MACHINEX**