

2014 | KBA RAPIDA RA 106 6 L FAPC ALV3 CX

+ STAMPA OFFSET ANNO: 2014 6 COLOR + COATER



DESCRIZIONE DELLA STAMPANTE

ATTREZZATURE

- Double sheet control - ultrasonic
- VARIDAMP alcohol dampening
- Attrezzatura CX (attrezzatura supplementare per cartone fino a 1,2 mm)
- Intercommunication system between infeed and delivery
- elevated press 450 mm
- Lack Unit (Harris & Bruno)
- Hikey Picker
- Dust Removal in the Infeed
- CleanTronic Multi - Multi-purpose washing system for blankets and impression cylinders & roller washing system in case of using different types of ink
- EES - Emission Extraction System
- Wall screen for visualisation of all press processes
- Additional package "Active air-cooling for control cabinets"
- Extended delivery 3800 mm (ALV 3)
- Blower cassette for cardboard sheet guiding
- Fully-automatic plate change FAPC, incl. one pneumatic plate bending device at the gallery
- Pacchetto aggiuntivo "Apparecchiature antistatiche ad alta

SPAIN | GERMANY | USA | ITALY | TURKEY | CHINA | BRAZIL | MEXICO | PERU



DETTAGLI TECNICI

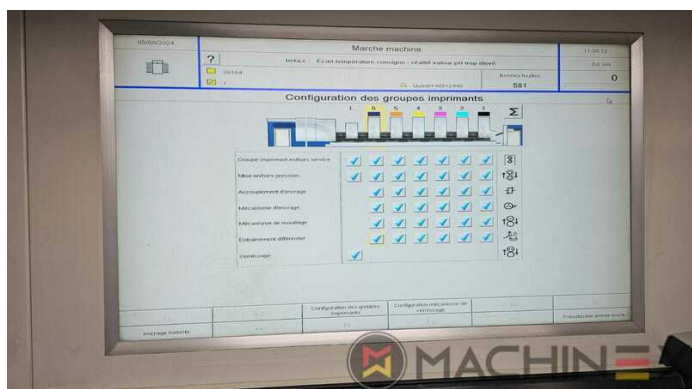
- Contatore (Milioni) : 243 Million
- Stampa in uscita fogli all'ora : 20,000 sh/h
- Spessore del materiale (mm):: 40g/m2 - 1,2 mm
- Formato massimo : 740 x 1060 mm
- Formato mínimo :: 340 x 480 mm

+34 682 639 187

info@machinex.com



- 1 Coating unit (L) with chambered doctor blade system
- Inking unit temperature control without ink duct roller cooling, incl. High-tech combi-cooling unit, air-cooled (TECHNOTRANS)
- Pacchetto aggiuntivo "High-Speed" per macchine da stampa in linea 20.000 sh/h
- KBA VariDry IR/HotAir in erogazione e in erogazione prolungata (ALV3)
- Combi-Cooling Unit with Remote Condenser and FloClear Filtration System
- Varnish supply and cleaning system for water-based varnish, with operation via control console, pump output dependent on viscosity (HARRIS & BRUNO)
- Dryer connection for final and intermediate dryers
- In-line tower coater
- HS - High Speed package 20.000 sh/h

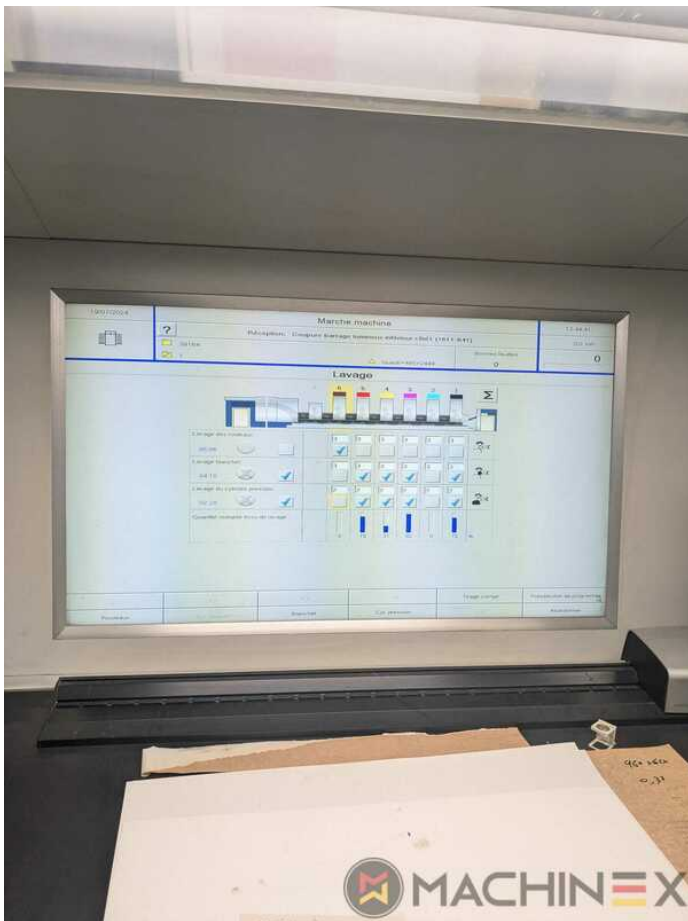


SPAIN | GERMANY | USA | ITALY | TURKEY | CHINA | BRAZIL | MEXICO | PERU

+34 682 639 187

info@machinex.com





SPAIN | GERMANY | USA | ITALY | TURKEY | CHINA | BRAZIL | MEXICO | PERU

+34 682 639 187

info@machinex.com





SPAIN | GERMANY | USA | ITALY | TURKEY | CHINA | BRAZIL | MEXICO | PERU

+34 682 639 187

info@machinex.com

 **MACHINEX**



SPAIN | GERMANY | USA | ITALY | TURKEY | CHINA | BRAZIL | MEXICO | PERU

+34 682 639 187

info@machinex.com

 **MACHINEX**



SPAIN | GERMANY | USA | ITALY | TURKEY | CHINA | BRAZIL | MEXICO | PERU

+34 682 639 187

info@machinex.com





SPAIN | GERMANY | USA | ITALY | TURKEY | CHINA | BRAZIL | MEXICO | PERU

+34 682 639 187

info@machinex.com

 **MACHINEX**



SPAIN | GERMANY | USA | ITALY | TURKEY | CHINA | BRAZIL | MEXICO | PERU

+34 682 639 187

info@machinex.com





SPAIN | GERMANY | USA | ITALY | TURKEY | CHINA | BRAZIL | MEXICO | PERU

+34 682 639 187

info@machinex.com

 **MACHINEX**



SPAIN | GERMANY | USA | ITALY | TURKEY | CHINA | BRAZIL | MEXICO | PERU

+34 682 639 187

info@machinex.com

 **MACHINEX**



SPAIN | GERMANY | USA | ITALY | TURKEY | CHINA | BRAZIL | MEXICO | PERU

+34 682 639 187

info@machinex.com

 **MACHINEX**



SPAIN | GERMANY | USA | ITALY | TURKEY | CHINA | BRAZIL | MEXICO | PERU

+34 682 639 187

info@machinex.com





SPAIN | GERMANY | USA | ITALY | TURKEY | CHINA | BRAZIL | MEXICO | PERU

+34 682 639 187

info@machinex.com

 **MACHINEX**



SPAIN | GERMANY | USA | ITALY | TURKEY | CHINA | BRAZIL | MEXICO | PERU

+34 682 639 187

info@machinex.com

 **MACHINEX**