

2004 | HEIDELBERG CD 102 5 LX

+ USED PRINTING MACHINES 2004 5 COLOR + COATER



- CP 2000 - Digital machine control and diagnosis
- Autoplate (Semi automatic plate change)
- Eltex ion blower in feeder
- Extended delivery HD version 2
- Extended delivery LX2
- Preset Plus in feeder
- TECHNOTRANS
- Max speed 15.000 sheets/h
- AirStar pro air cooled with compressed air dryer
- High Pile delivery
- Prinect Press Center
- Thickness 0,3 - to 1,0 mm
- Alcolor Vario dampening
- Automatic Blanket Impressions Cylinders & Inking Rollers washing devices
- Intercom to delivery
- multiple sheet detector
- Powder sprayer
- Program-controlled wash-up device (Roller, Blanket & ICWD)



- Sheet Counter : 295 Million
- Max. format : 720 x 1020 mm
- Min. format :: 280 x 420 mm
- Print output : 15,000 sh/h

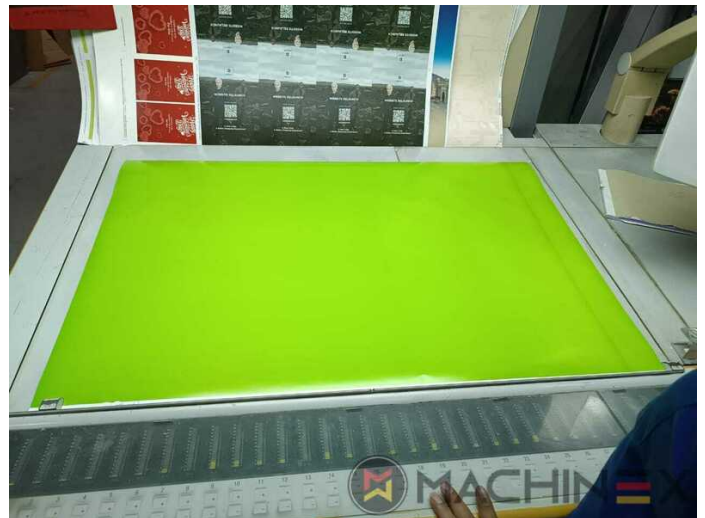
SPAIN | GERMANY | USA | ITALY | TURKEY | CHINA | BRAZIL | MEXICO | PERU

+34 682 639 187

info@machinex.com



- IPA-Metering Premium
- Preset delivery
- Varnish Supply unit 360 l/h
- Complete with manuals and tools
- Ultrasonic double sheet detection



SPAIN | GERMANY | USA | ITALY | TURKEY | CHINA | BRAZIL | MEXICO | PERU

+34 682 639 187

info@machinex.com





SPAIN | GERMANY | USA | ITALY | TURKEY | CHINA | BRAZIL | MEXICO | PERU


+34 682 639 187


info@machinex.com





SPAIN | GERMANY | USA | ITALY | TURKEY | CHINA | BRAZIL | MEXICO | PERU

 +34 682 639 187

 info@machinex.com

 **MACHINEX**



SPAIN | GERMANY | USA | ITALY | TURKEY | CHINA | BRAZIL | MEXICO | PERU

+34 682 639 187

info@machinex.com





SPAIN | GERMANY | USA | ITALY | TURKEY | CHINA | BRAZIL | MEXICO | PERU

+34 682 639 187

info@machinex.com



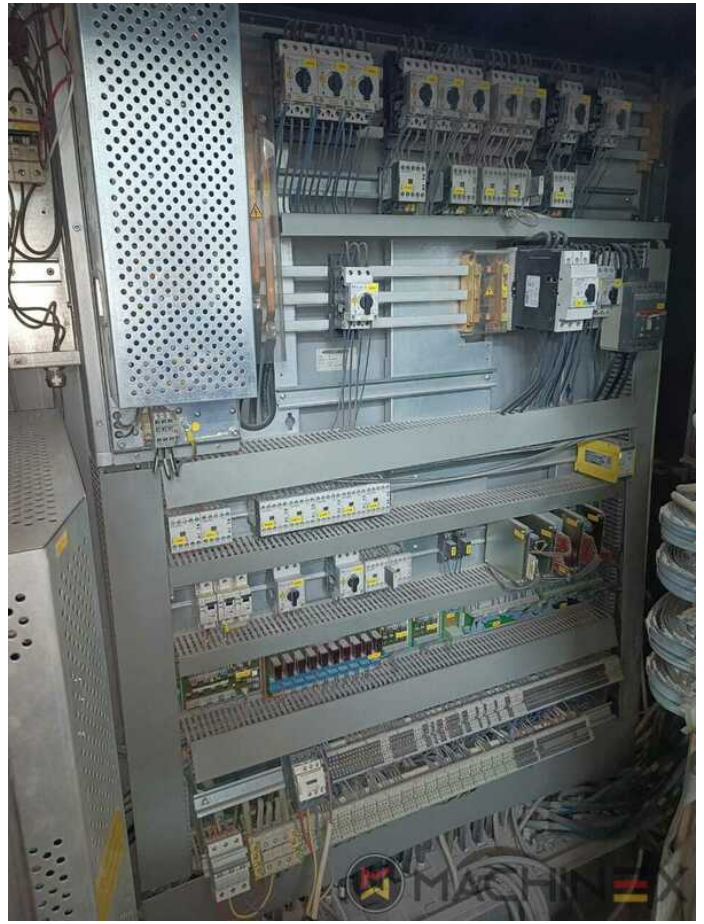


SPAIN | GERMANY | USA | ITALY | TURKEY | CHINA | BRAZIL | MEXICO | PERU

+34 682 639 187

info@machinex.com





SPAIN | GERMANY | USA | ITALY | TURKEY | CHINA | BRAZIL | MEXICO | PERU

+34 682 639 187

info@machinex.com





SPAIN | GERMANY | USA | ITALY | TURKEY | CHINA | BRAZIL | MEXICO | PERU

+34 682 639 187

info@machinex.com

