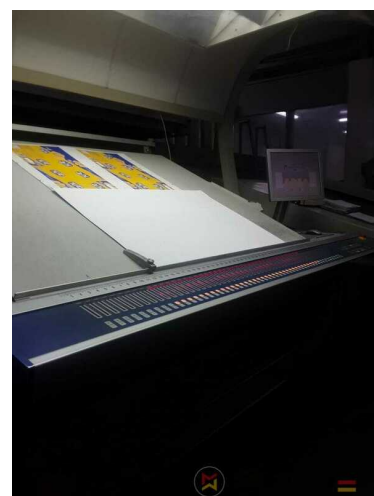


2012 | KBA RAPIDA RA 162 A 6 + L CX

 USED PRINTING MACHINES  YEAR: 2012  6 COLOR + COATER



PRINTER DESCRIPTION

Ideal for: • Folding carton production • Large-format packaging
• Commercial print applications requiring high quality Suitable for: • Corrugated board (microflute, E, F, N) • Solid board & folding carton • Large-format packaging and display print • Commercial print jobs requiring large format and durability

EQUIPMENT


- Crane for anilox roller changing
- Extended delivery 2600 mm
- VARIDAMP alcohol dampening
- Automatic Nonstop system for pile logistic in feeder and delivery
- CX equipment (additional equipment for cardboard until 1.2 mm)
- Densitronic S Professional measuring table
- Intercommunication system between infeed and delivery
- Kba Vari Dry - dryer
- KBA Grafic Rapid Dry
- Ultrasonic double sheet control
- Thin-Paper device

SPAIN | GERMANY | USA | ITALY | TURKEY | CHINA | BRAZIL | MEXICO | PERU



TECHNICAL DETAILS

- Sheet Counter : 185 mio
- Print output : 13.000 s.p.h
- Max. format : 1200 x 1620 mm
- Min. format :: 600 x 920 mm
- Stock Thickness :: 0,04 up to 1.2 mm

 +34 682 639 187

 info@machinex.com



circulation with Ipasonic

- Chromed cylinders
- Infrared + Hot air dryer
- Kersten antistatic high performance version
- Automatic feeder height adjustment
- Kersten Ionblowers in feeder and delivery
- Blower ionization on feeder
- ErgoTronic Professional console with ColorTronic ink metering "19" TouchScreen
- Coating unit with chambered doctor blade and anilox
- Additional anilox roller (according to KBA standard)
- ErgoTronic ACR - Automatic Camera Register, video camera for register setting
- Automatic non-stop feeder
- Fully-automatic plate change FAPC, incl. one pneumatic plate bending device at the gallery
- 2 pcs. electromechanical double sheet control (for microwave / heavy cardboard)
- Pneumatic side guides with optical side guide control, automatic format setting from ErgoTronic console
- Raise 630 mm complete (feeder, delivery and gallery)
- Sheet travel control per ÜT for cardboard ($>450\text{g/m}^2$) (CX)
- Additional package Micro-corrugated and heavy board "standard"



SPAIN | GERMANY | USA | ITALY | TURKEY | CHINA | BRAZIL | MEXICO | PERU

+34 682 639 187

info@machinex.com





SPAIN | GERMANY | USA | ITALY | TURKEY | CHINA | BRAZIL | MEXICO | PERU

+34 682 639 187

info@machinex.com





SPAIN | GERMANY | USA | ITALY | TURKEY | CHINA | BRAZIL | MEXICO | PERU

+34 682 639 187

info@machinex.com

MACHINEX



SPAIN | GERMANY | USA | ITALY | TURKEY | CHINA | BRAZIL | MEXICO | PERU

+34 682 639 187

info@machinex.com



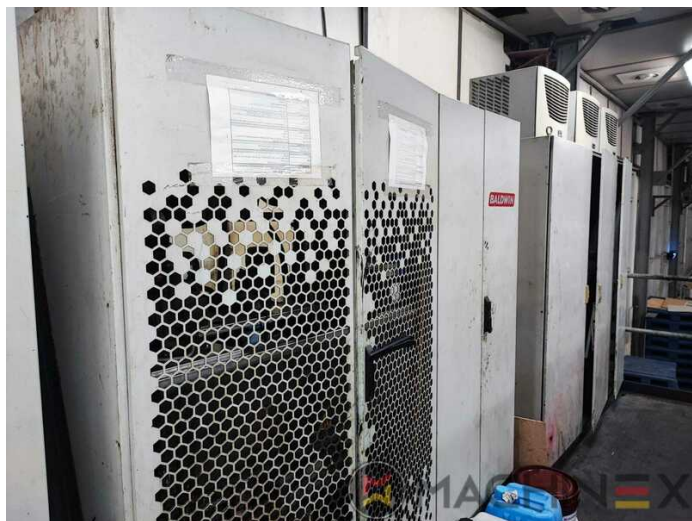


SPAIN | GERMANY | USA | ITALY | TURKEY | CHINA | BRAZIL | MEXICO | PERU

+34 682 639 187

info@machinex.com





SPAIN | GERMANY | USA | ITALY | TURKEY | CHINA | BRAZIL | MEXICO | PERU

+34 682 639 187

info@machinex.com



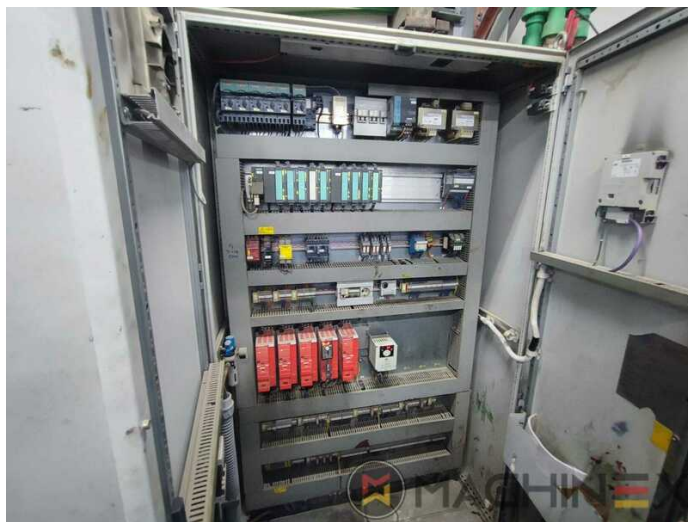


SPAIN | GERMANY | USA | ITALY | TURKEY | CHINA | BRAZIL | MEXICO | PERU

+34 682 639 187

info@machinex.com





SPAIN | GERMANY | USA | ITALY | TURKEY | CHINA | BRAZIL | MEXICO | PERU

+34 682 639 187

info@machinex.com

