

2017 | HEIDELBERG SUPRASETTER 106 DCL

+ USED PREPRESS EQUIPMENT ◊ AN: 2017 📄 USED CTP COMPUTER TO PLATE



DESCRIPTION DE L'IMPRIMANTE

SupraSetter A 106 DCL up to 18 pph in full format / 2400 dpi)
<>1 Laserhead 64 Diodes<>punching beams Punching configuration HD + Bacher 780 mm<>suction device<>Two cassetts<>each with 110 plates (0.3 mm thickness)<>plate formats of (height x width) from 370 x 323) mm to 930 x1140 mm<>Dimensions of the exposure:<>(width x depth x height) 2150 x 1494 x 1536 mm<>Dimensions of DCL :<>(width x depth x height) 1680 x 1720 x 1150 mm<>plate stacker PST 36 L<>WorkStation T3630-C6 with Prinect shooter and Tiff download options (need license)



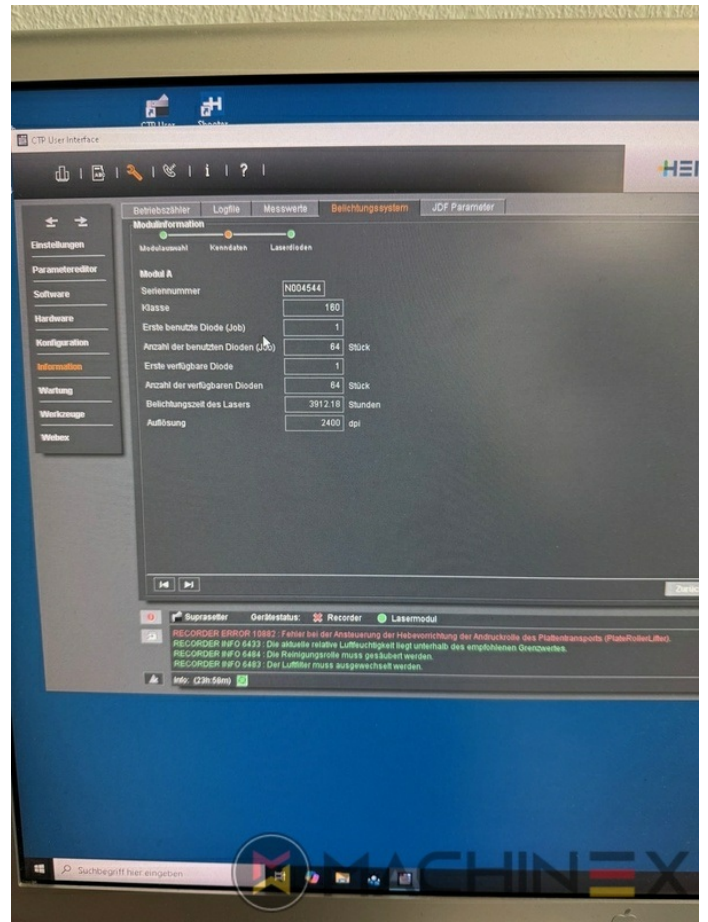
DÉTAILS TECHNIQUES

SPAIN | GERMANY | USA | ITALY | TURKEY | CHINA | BRAZIL | MEXICO | PERU

☎ +34 682 639 187

✉ info@machinex.com



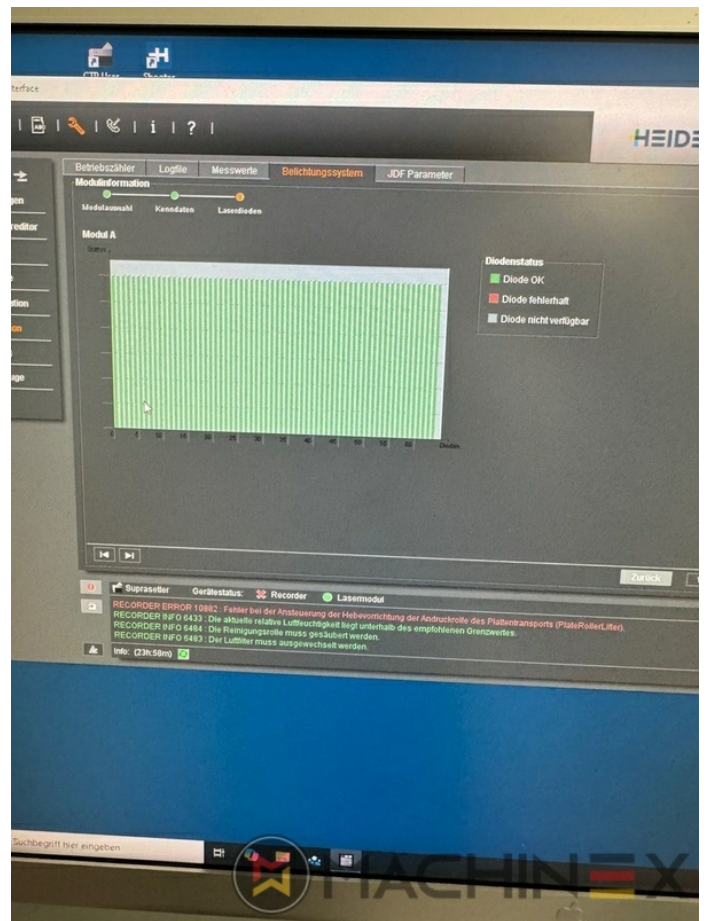
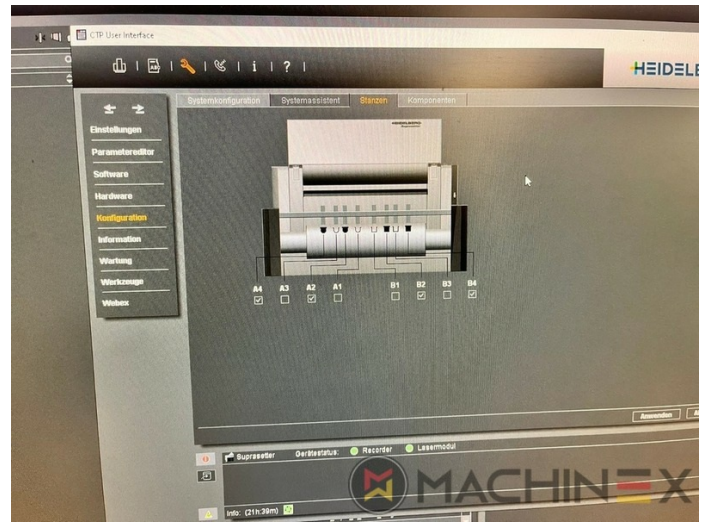


SPAIN | GERMANY | USA | ITALY | TURKEY | CHINA | BRAZIL | MEXICO | PERU

+34 682 639 187

info@machinex.com





SPAIN | GERMANY | USA | ITALY | TURKEY | CHINA | BRAZIL | MEXICO | PERU

+34 682 639 187

info@machinex.com





SPAIN | GERMANY | USA | ITALY | TURKEY | CHINA | BRAZIL | MEXICO | PERU

+34 682 639 187

info@machinex.com

