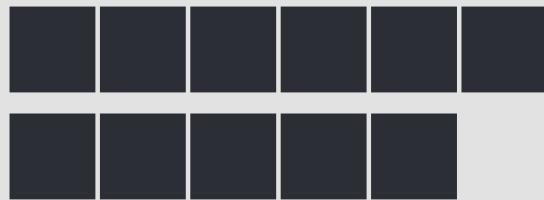


# 2014 | HEIDELBERG MK PROMATRIX 106 CS

+ USED PACKAGING MACHINES    2014    USED DIE CUTTER (FLATBED)



- Complete with manuals and tools
- Electronic sheet monitoring
- Cutting plate fine adjustment
- Non-Stop function at feeder and delivery
- Integrated fine adjustment system for thin cutting plates
- Suction head for paper, board and corrugated board
- Motorized suction head adjustment (vertical and horizontal)
- Pile platform with motorized side pile adjustment
- Mechanical double-sheet detection
- Pull/Push side lay on both sides
- Central adjustment system for rollers and brushes
- MasterSet – optical sheet alignment system
- Non-Stop rolling carpet
- Pneumatic flap for test sheet removal
- Sheet size adjustment with position indicators
- Sheet brake brush with motorized brake force adjustment
- Processes materials as thin as 90 g/m<sup>2</sup>.
- Upper Stripping Frame with quick lock and fine adjustment



- Working Hours : 11130
- Maximum Format: 760 × 1.060 mm
- Minimum Format : 350 × 400 mm
- Speed : 8.000 sp/h
- Max Pressure : 2,6 MN / 260 t
- Min Paper Thickness : 90 g/m<sup>2</sup>
- Cardboard Thickness: 2 000 g/m<sup>2</sup>
- Corrugated board: 4,0 mm

SPAIN | GERMANY | USA | ITALY | TURKEY | CHINA | BRAZIL | MEXICO | PERU

+34 682 639 187

info@machinex.com





SPAIN | GERMANY | USA | ITALY | TURKEY | CHINA | BRAZIL | MEXICO | PERU

+34 682 639 187

info@machinex.com

MACHINEX



SPAIN | GERMANY | USA | ITALY | TURKEY | CHINA | BRAZIL | MEXICO | PERU

 +34 682 639 187

 [info@machinex.com](mailto:info@machinex.com)

 **MACHINEX**





SPAIN | GERMANY | USA | ITALY | TURKEY | CHINA | BRAZIL | MEXICO | PERU

+34 682 639 187


info@machinex.com





SPAIN | GERMANY | USA | ITALY | TURKEY | CHINA | BRAZIL | MEXICO | PERU

 +34 682 639 187

 [info@machinex.com](mailto:info@machinex.com)

 **MACHINEX**



SPAIN | GERMANY | USA | ITALY | TURKEY | CHINA | BRAZIL | MEXICO | PERU

 +34 682 639 187

 [info@machinex.com](mailto:info@machinex.com)

 **MACHINEX**





SPAIN | GERMANY | USA | ITALY | TURKEY | CHINA | BRAZIL | MEXICO | PERU

+34 682 639 187

info@machinex.com







SPAIN | GERMANY | USA | ITALY | TURKEY | CHINA | BRAZIL | MEXICO | PERU

+34 682 639 187

info@machinex.com

 **MACHINEX**





SPAIN | GERMANY | USA | ITALY | TURKEY | CHINA | BRAZIL | MEXICO | PERU

+34 682 639 187

info@machinex.com

 **MACHINEX**



SPAIN | GERMANY | USA | ITALY | TURKEY | CHINA | BRAZIL | MEXICO | PERU

 +34 682 639 187

 [info@machinex.com](mailto:info@machinex.com)

 **MACHINEX**





SPAIN | GERMANY | USA | ITALY | TURKEY | CHINA | BRAZIL | MEXICO | PERU

+34 682 639 187

info@machinex.com







SPAIN | GERMANY | USA | ITALY | TURKEY | CHINA | BRAZIL | MEXICO | PERU

+34 682 639 187

info@machinex.com







SPAIN | GERMANY | USA | ITALY | TURKEY | CHINA | BRAZIL | MEXICO | PERU

+34 682 639 187

info@machinex.com





SPAIN | GERMANY | USA | ITALY | TURKEY | CHINA | BRAZIL | MEXICO | PERU

+34 682 639 187

info@machinex.com





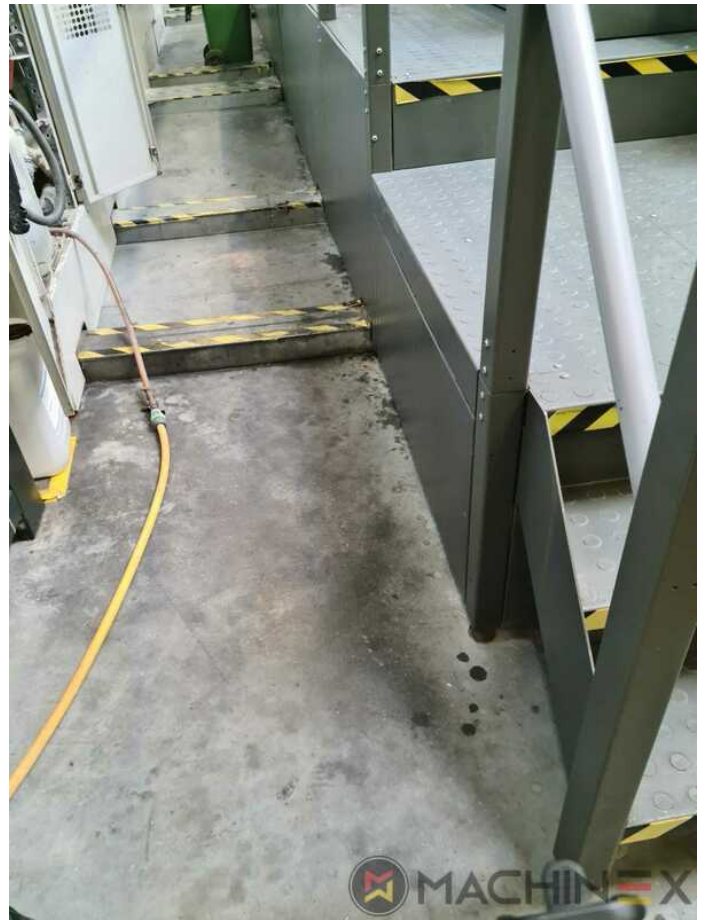


SPAIN | GERMANY | USA | ITALY | TURKEY | CHINA | BRAZIL | MEXICO | PERU

 +34 682 639 187

 [info@machinex.com](mailto:info@machinex.com)

 **MACHINEX**



SPAIN | GERMANY | USA | ITALY | TURKEY | CHINA | BRAZIL | MEXICO | PERU

+34 682 639 187

info@machinex.com





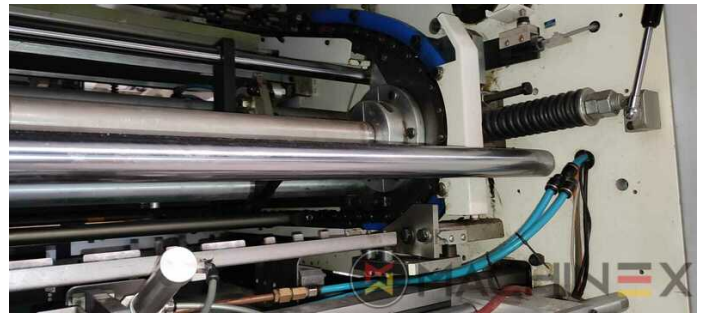
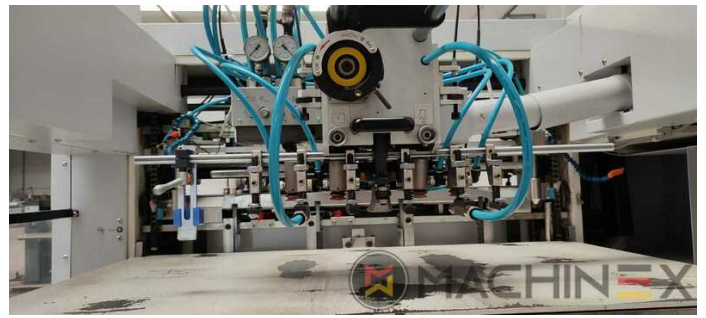
SPAIN | GERMANY | USA | ITALY | TURKEY | CHINA | BRAZIL | MEXICO | PERU

+34 682 639 187

info@machinex.com

 **MACHINEX**





SPAIN | GERMANY | USA | ITALY | TURKEY | CHINA | BRAZIL | MEXICO | PERU

 +34 682 639 187

 [info@machinex.com](mailto:info@machinex.com)

 **MACHINEX**



SPAIN | GERMANY | USA | ITALY | TURKEY | CHINA | BRAZIL | MEXICO | PERU

 +34 682 639 187

 [info@machinex.com](mailto:info@machinex.com)

 **MACHINEX**





SPAIN | GERMANY | USA | ITALY | TURKEY | CHINA | BRAZIL | MEXICO | PERU

+34 682 639 187

info@machinex.com





SPAIN | GERMANY | USA | ITALY | TURKEY | CHINA | BRAZIL | MEXICO | PERU

 +34 682 639 187

 [info@machinex.com](mailto:info@machinex.com)

 **MACHINEX**





SPAIN | GERMANY | USA | ITALY | TURKEY | CHINA | BRAZIL | MEXICO | PERU

 +34 682 639 187


 [info@machinex.com](mailto:info@machinex.com)

 **MACHINEX**



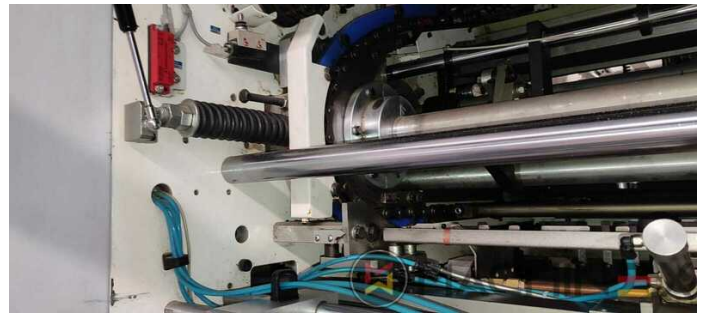
SPAIN | GERMANY | USA | ITALY | TURKEY | CHINA | BRAZIL | MEXICO | PERU

 +34 682 639 187

 [info@machinex.com](mailto:info@machinex.com)

 **MACHINEX**





SPAIN | GERMANY | USA | ITALY | TURKEY | CHINA | BRAZIL | MEXICO | PERU

+34 682 639 187

info@machinex.com





SPAIN | GERMANY | USA | ITALY | TURKEY | CHINA | BRAZIL | MEXICO | PERU

 +34 682 639 187

 [info@machinex.com](mailto:info@machinex.com)

 **MACHINEX**





SPAIN | GERMANY | USA | ITALY | TURKEY | CHINA | BRAZIL | MEXICO | PERU

+34 682 639 187

info@machinex.com

