

1999 | KBA RAPIDA RA 162 6 L CX ALV3

+ USED PRINTING MACHINES  ■■■ : 1999  6 COLOR + COATER




- Cardboard device
- VARIDAMP alcohol dampening
- Saphira Blanket Pro 100
- CX equipment (additional equipment for cardboard until 1.2 mm)
- Intercommunication system between infeed and delivery
- Weko AP 262 Powder
- Baldwin CombiLiner 852 High Tech cooling device
- Elevated Machine
- Eltosch IR Infra red dryer
- PWVA Full automatic plate change
- Kersten Ionblowers in feeder and delivery
- CIPLink Ink profile presetting via CIP3 data
- ALV 3900 mm extended delivery
- ITC -Ink Temperature Control
- Technotrans AlcoSmart AZR
- 1x Winding stand incl. supply reel, motorized (KASPER)
- Raise 630 mm complete (feeder ,delivery and gallery)
- Harris and Bruno Aqueous Lithocoat Circulator



- Stock Thickness :: 250 g/m up to 1.2 mm
- Max. format : 1120 x 1620

SPAIN | GERMANY | USA | ITALY | TURKEY | CHINA | BRAZIL | MEXICO | PERU

 +34 682 639 187

 info@machinex.com

 **MACHINEX**

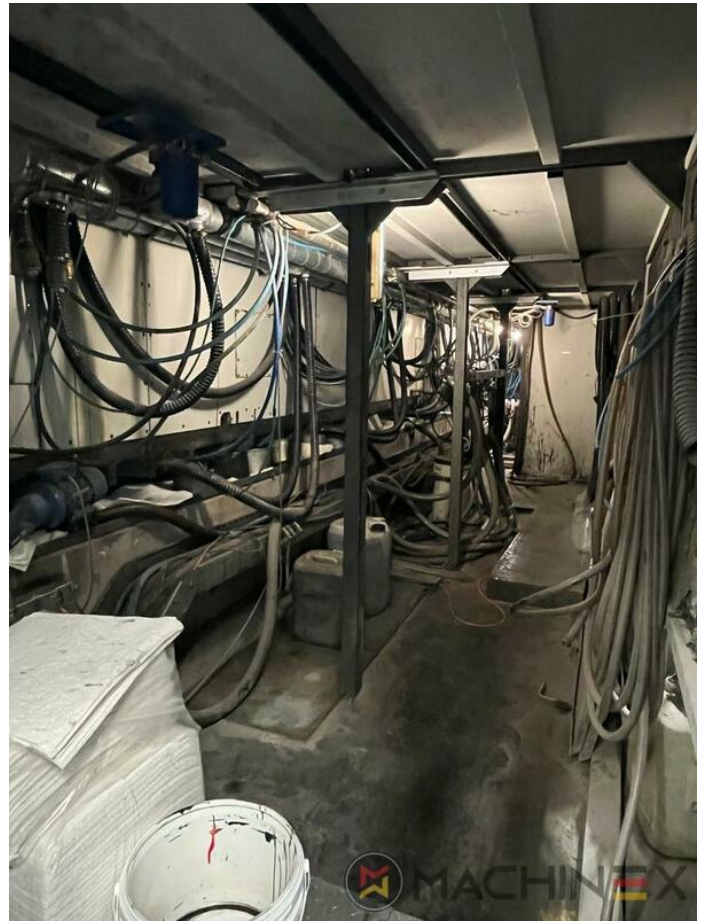


SPAIN | GERMANY | USA | ITALY | TURKEY | CHINA | BRAZIL | MEXICO | PERU

+34 682 639 187

info@machinex.com





SPAIN | GERMANY | USA | ITALY | TURKEY | CHINA | BRAZIL | MEXICO | PERU

+34 682 639 187

info@machinex.com

