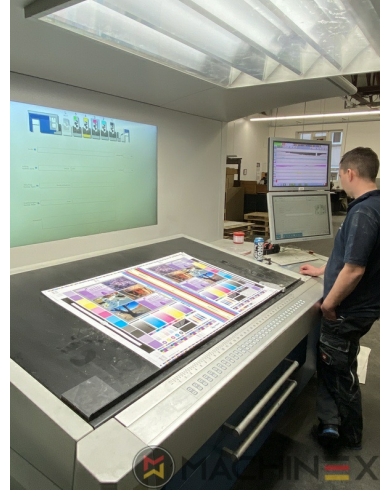


2014 | KBA RAPIDA RA 106 5 L FAPC ALV2

+ USED PRINTING MACHINES 2014 : سنة 5 COLOR + COATER



وصف الطابعة

ادوات

- VARIDAMP alcohol dampening
- Saphira Blanket Pro 100
- CX equipment (additional equipment for cardboard until 1.2 mm)
- Densitronic S Professional measuring table
- Intercommunication system between infeed and delivery
- Technotrans Combined high-tech cooling device
- SIS Sensoric Infeed System
- Ergotronic console
- Inline Measure System LITHEC Lithoflash
- ITC -Ink Temperature Control
- Lithec Lithoflash for inline color control
- Cleantronic Multi purpose washing system for blanket and impression cylinder & roller washing system
- ErgoTronic Professional console with ColorTronic ink metering "19" TouchScreen
- Coating unit with chambered doctor blade and anilox

SPAIN | GERMANY | USA | ITALY | TURKEY | CHINA | BRAZIL | MEXICO | PERU



اصطلاحات تفاصيل

- Sheet Counter : 152 Million
- Frequency: 400V/50Hz
- Print output : 18.000 s/h
- Max. format : 750 x 1,060 mm

+34 682 639 187

info@machinex.com



- Blower cassette for cardboard sheet guiding
- Additional anilox roller (according to KBA standard)
- Wall screen for visualisation of all press processes
- LogoTronic Professional – Software for production management and JDF-interface for data exchange with MIS, virtual machine is provided by the customer (1x per print shop)
- Additional package "Active air-cooling for control cabinets"
- Fully-automatic plate change FAPC, incl. one pneumatic plate bending device at the gallery
- IPA reduction < 5% incl. microfilter "beta.f" (TECHNOTRANS)
- Additional package for micro corrugated until 1.4 mm
- VariDry IR/HotAir in delivery and extended delivery (ALV2)
- Kba PressSupport 24 Sheetfed with internet connection for remote maintenance and software updates
- Additional package "High efficiency antistatic equipment "
- 1 Coating unit (L) with chambered doctor blade system
- Roller covering for alcohol-reduced printing
- Interface to connect external inline-third party measurement devices
- Sound insulation for feeder head



SPAIN | GERMANY | USA | ITALY | TURKEY | CHINA | BRAZIL | MEXICO | PERU

+34 682 639 187

info@machinex.com





SPAIN | GERMANY | USA | ITALY | TURKEY | CHINA | BRAZIL | MEXICO | PERU

+34 682 639 187

info@machinex.com





SPAIN | GERMANY | USA | ITALY | TURKEY | CHINA | BRAZIL | MEXICO | PERU

+34 682 639 187

info@machinex.com





SPAIN | GERMANY | USA | ITALY | TURKEY | CHINA | BRAZIL | MEXICO | PERU

+34 682 639 187

info@machinex.com





SPAIN | GERMANY | USA | ITALY | TURKEY | CHINA | BRAZIL | MEXICO | PERU

+34 682 639 187

info@machinex.com



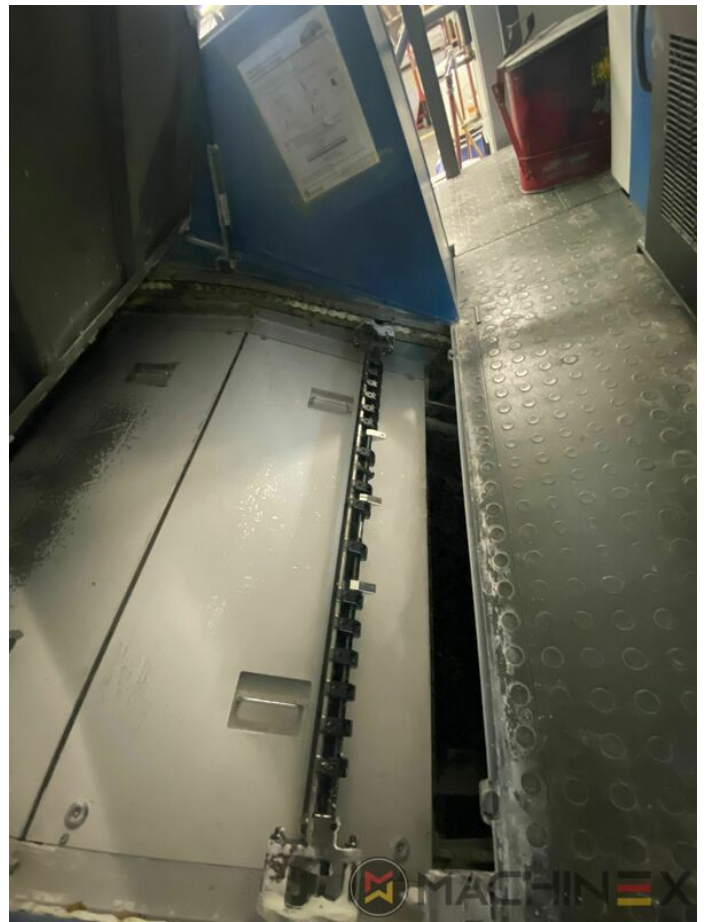


SPAIN | GERMANY | USA | ITALY | TURKEY | CHINA | BRAZIL | MEXICO | PERU

+34 682 639 187

info@machinex.com





SPAIN | GERMANY | USA | ITALY | TURKEY | CHINA | BRAZIL | MEXICO | PERU

+34 682 639 187

info@machinex.com

MACHINEX



SPAIN | GERMANY | USA | ITALY | TURKEY | CHINA | BRAZIL | MEXICO | PERU

+34 682 639 187

info@machinex.com



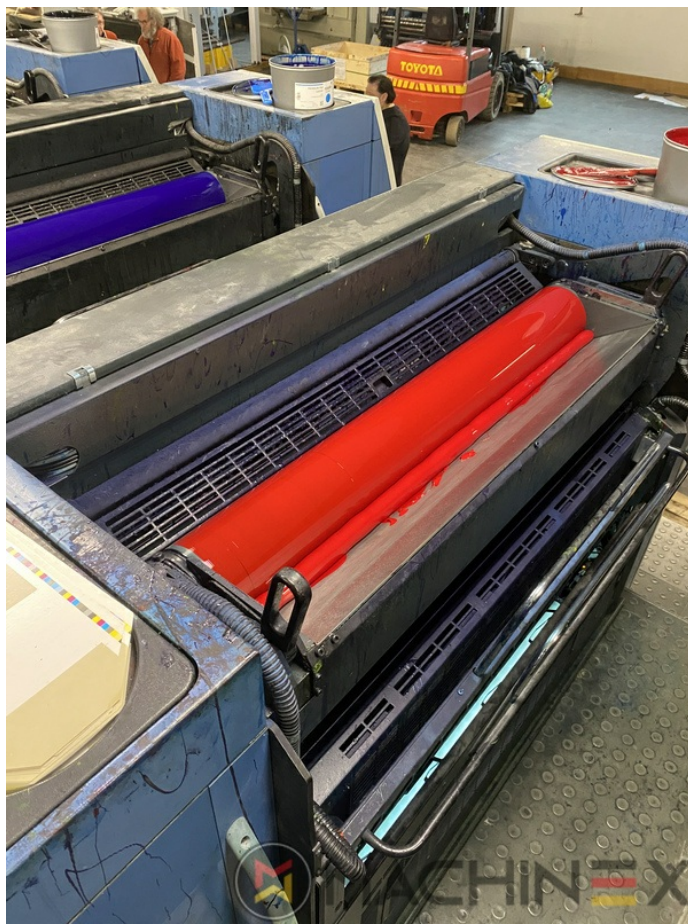


SPAIN | GERMANY | USA | ITALY | TURKEY | CHINA | BRAZIL | MEXICO | PERU

+34 682 639 187

info@machinex.com



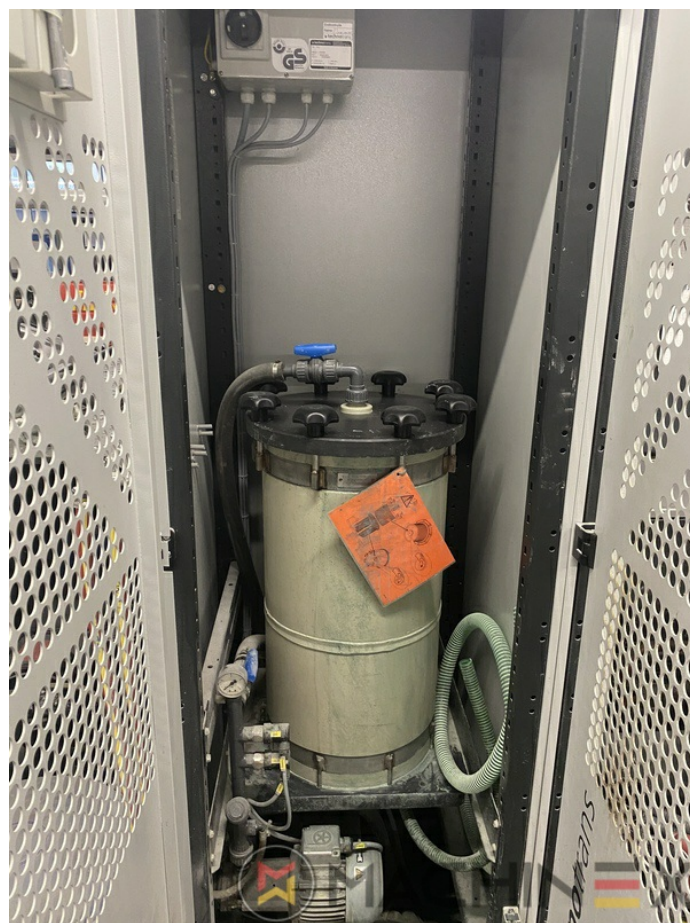


SPAIN | GERMANY | USA | ITALY | TURKEY | CHINA | BRAZIL | MEXICO | PERU

+34 682 639 187

info@machinex.com





SPAIN | GERMANY | USA | ITALY | TURKEY | CHINA | BRAZIL | MEXICO | PERU

+34 682 639 187

info@machinex.com

MACHINEX