

2014 | KOMORI GL 640 C UV

+ USED PRINTING MACHINES 2014 6 COLOR + COATER



Komori Lithrone GL 640 C press promotes eco-friendly printing by reducing energy requirements. With a maximum speed of 16,500 sheets per hour, it's the ultimate high performance printing machine.

- Intercommunication system between infeed and delivery
- FAPC full automatic plate change
- Automatic impression cylinder washing device
- Full-AMR Automated Make Ready
- Chromed cylinders
- KHS-AI (Advanced Interface) with Self-learning Function
- Air Side lay and Front lay Detector
- Filtration System of the dampening solution Technotrans Beta
- KOMORIMATIC-2 with delta effect dampening
- Anilox Tower Coater
- KMS V Komori Monitoring System
- Suction-tape feeder table
- Automatic paper size setting on feeder
- PQC (print quality control console)
- Venturi Air Guide (Skeleton Transfer Cylinder)



- Print output : 16.500 sp/h
- Max. format : 720 x 1,030 mm
- Sheet Counter : 83 Mio.
- Min. format :: 360 x 520
- Stock Thickness :: 0.04 – 1.0 mm
- Max. print format: 710 x 1020 mm
- Max. plate format (height x width): 800 x 1,030 mm
- Weight Approx: 45.000 KG

SPAIN | GERMANY | USA | ITALY | TURKEY | CHINA | BRAZIL | MEXICO | PERU

+34 682 639 187

info@machinex.com



- Printing units prepared for intermediate UV dryers
- Automatic Impression cylinder Cleaners (AICC)
- Automatic Ink Roller Cleaner (AIRC)
- Automatic blanket Washers (ABW)
- Komori Extended delivery
- Komori PDC SX Online Spectrophotometer Poli Filter Function
- Komori Smart Feedback program-controlled density changes
- Quality and reliability in an eco-friendly and economical innovative UV curing system
- Smart Sequencing for Automatic Job Processing
- Docking Station in all printing units
- Monitor on the PQC to check register, density
- Declutch on first and last unit
- Independent speed control of the dampening roller



SPAIN | GERMANY | USA | ITALY | TURKEY | CHINA | BRAZIL | MEXICO | PERU

+34 682 639 187

info@machinex.com





SPAIN | GERMANY | USA | ITALY | TURKEY | CHINA | BRAZIL | MEXICO | PERU

+34 682 639 187

info@machinex.com





SPAIN | GERMANY | USA | ITALY | TURKEY | CHINA | BRAZIL | MEXICO | PERU

+34 682 639 187

info@machinex.com

 **MACHINEX**

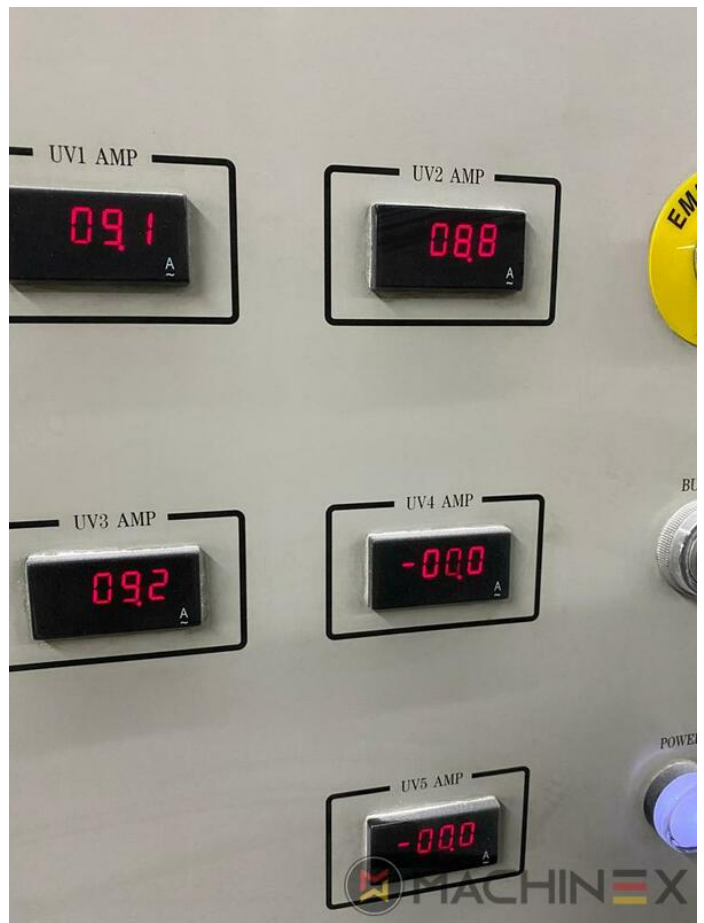


SPAIN | GERMANY | USA | ITALY | TURKEY | CHINA | BRAZIL | MEXICO | PERU

+34 682 639 187

info@machinex.com





SPAIN | GERMANY | USA | ITALY | TURKEY | CHINA | BRAZIL | MEXICO | PERU

+34 682 639 187

info@machinex.com





SPAIN | GERMANY | USA | ITALY | TURKEY | CHINA | BRAZIL | MEXICO | PERU

+34 682 639 187

info@machinex.com





SPAIN | GERMANY | USA | ITALY | TURKEY | CHINA | BRAZIL | MEXICO | PERU

+34 682 639 187

info@machinex.com



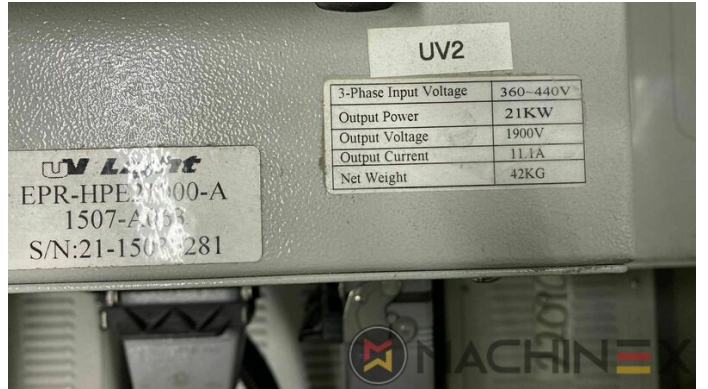


SPAIN | GERMANY | USA | ITALY | TURKEY | CHINA | BRAZIL | MEXICO | PERU

+34 682 639 187

info@machinex.com



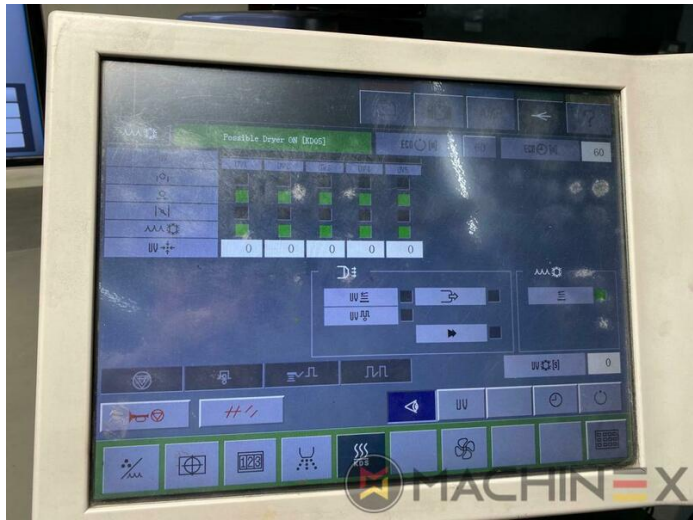
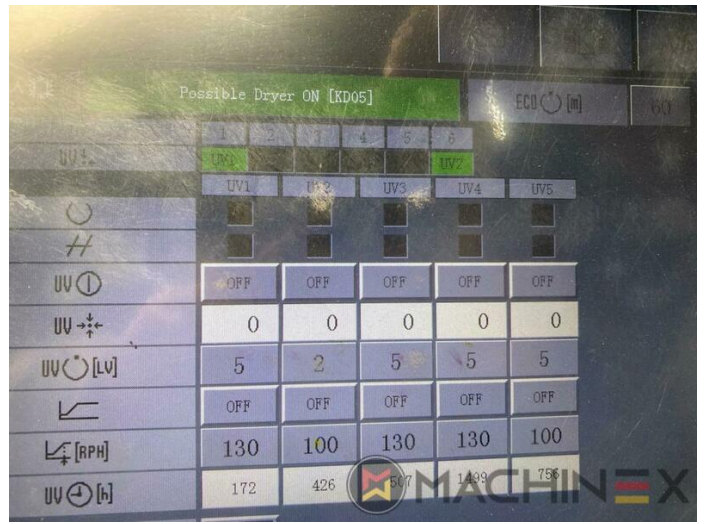


SPAIN | GERMANY | USA | ITALY | TURKEY | CHINA | BRAZIL | MEXICO | PERU

+34 682 639 187

info@machinex.com





SPAIN | GERMANY | USA | ITALY | TURKEY | CHINA | BRAZIL | MEXICO | PERU

+34 682 639 187

info@machinex.com





SPAIN | GERMANY | USA | ITALY | TURKEY | CHINA | BRAZIL | MEXICO | PERU

+34 682 639 187

info@machinex.com



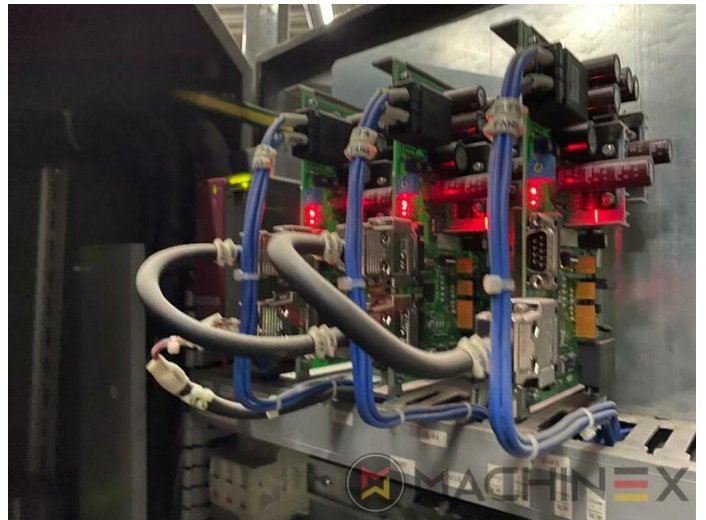
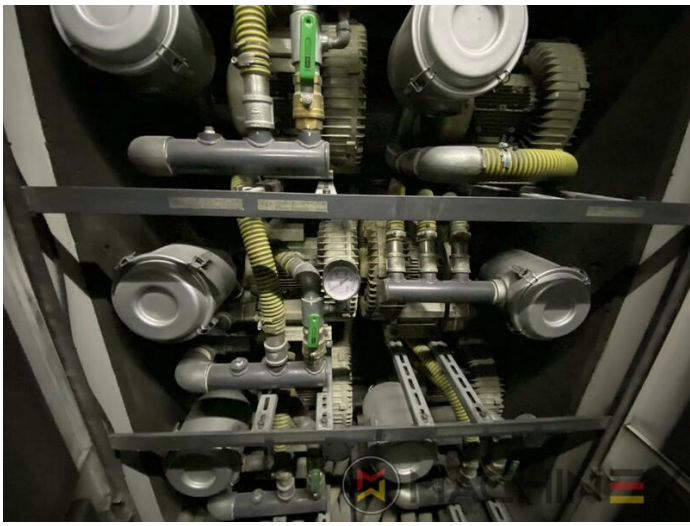


SPAIN | GERMANY | USA | ITALY | TURKEY | CHINA | BRAZIL | MEXICO | PERU

+34 682 639 187

info@machinex.com

 **MACHINEX**



SPAIN | GERMANY | USA | ITALY | TURKEY | CHINA | BRAZIL | MEXICO | PERU

+34 682 639 187

info@machinex.com

 **MACHINEX**



SPAIN | GERMANY | USA | ITALY | TURKEY | CHINA | BRAZIL | MEXICO | PERU

+34 682 639 187

info@machinex.com

